

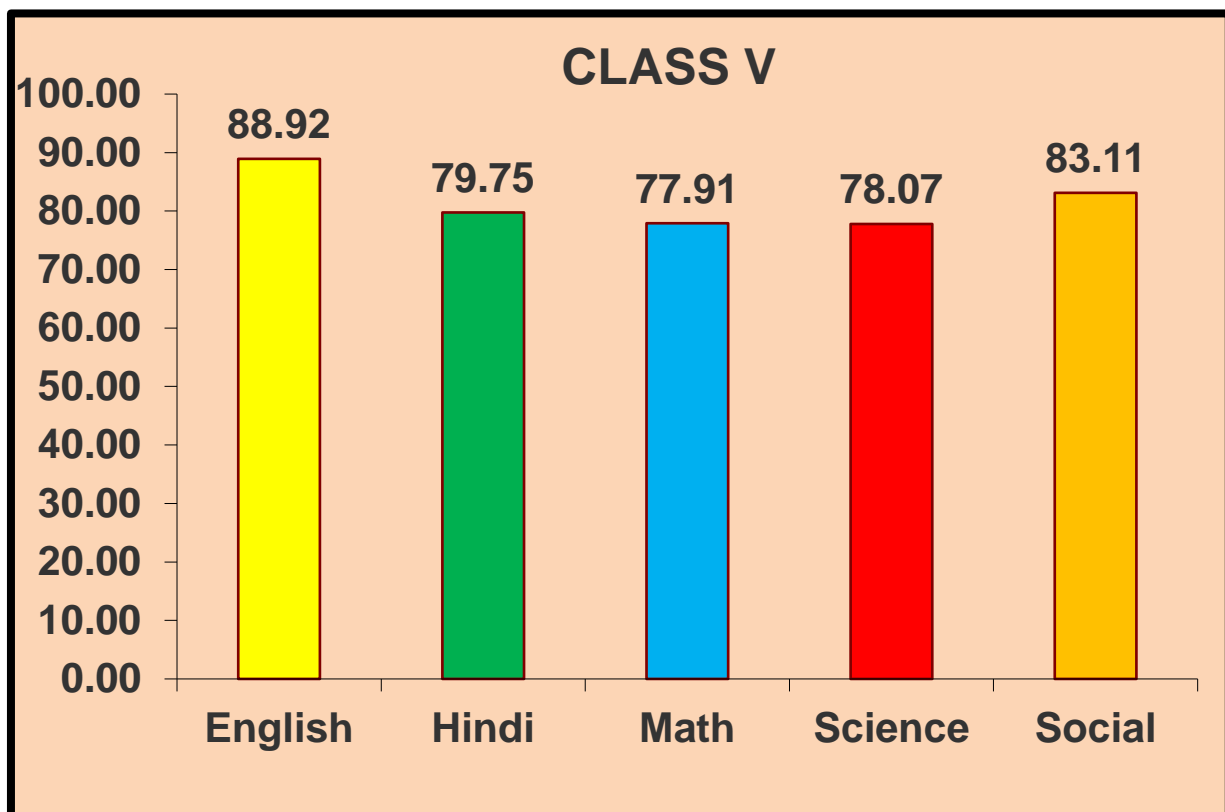


SANGHAMITRA SCHOOL

CLASS – V PERIODIC TEST – II RESULT ANALYSIS

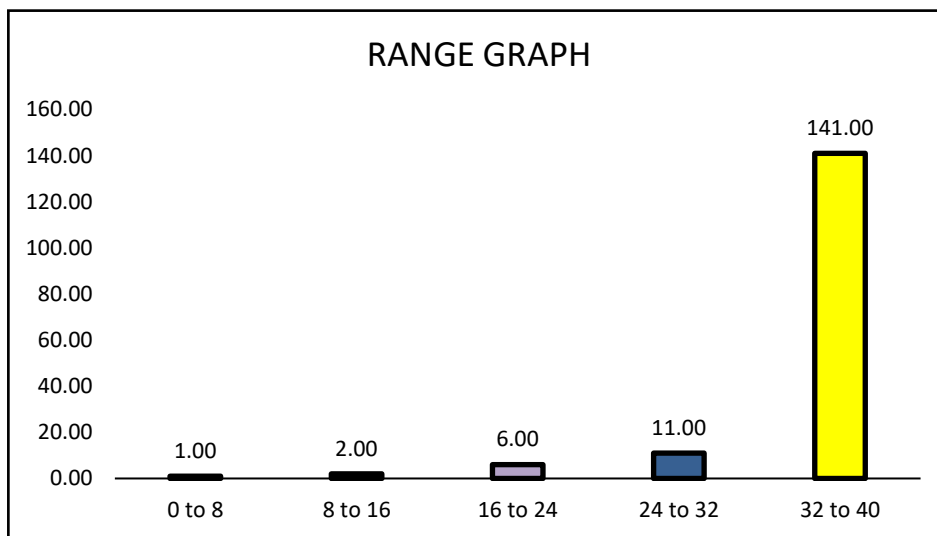
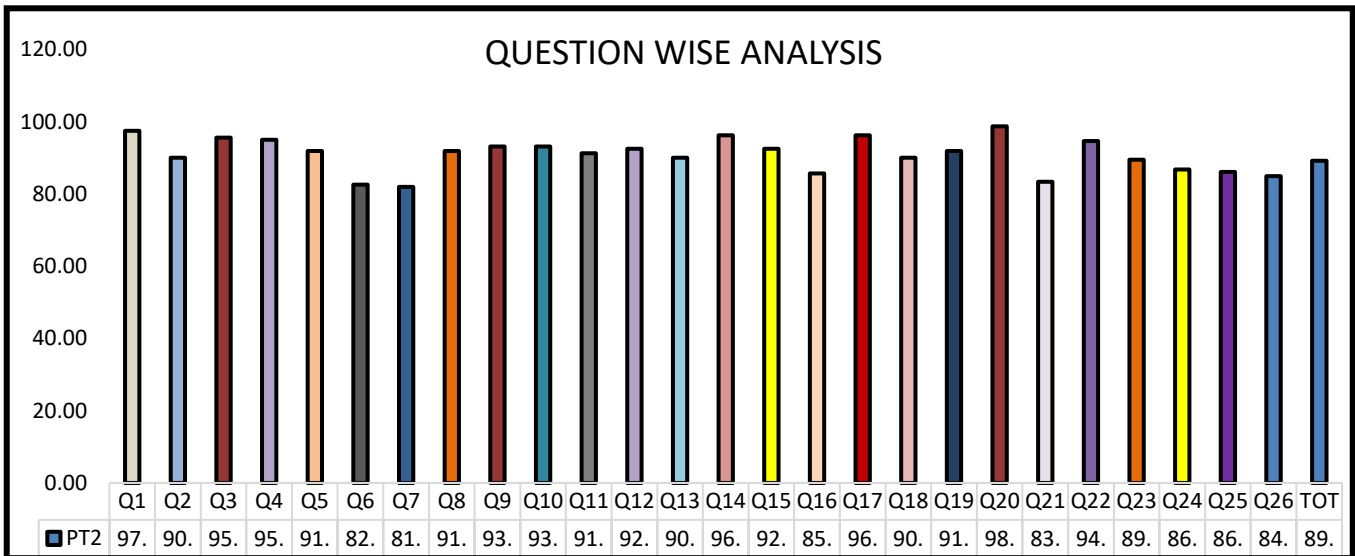
- **Exam Dates: 24.08.2021 to 28.08.2021**
- **No. of students – 165**
- **Type of Test: Subjective**
- **Marks - 40**
- **Time Allotted: 1 ½ Hrs**

GRAPHICAL REPRESENTATION



PERIODIC TEST 2 ANALYSIS ENGLISH CLASS 5 (26th August 2021)

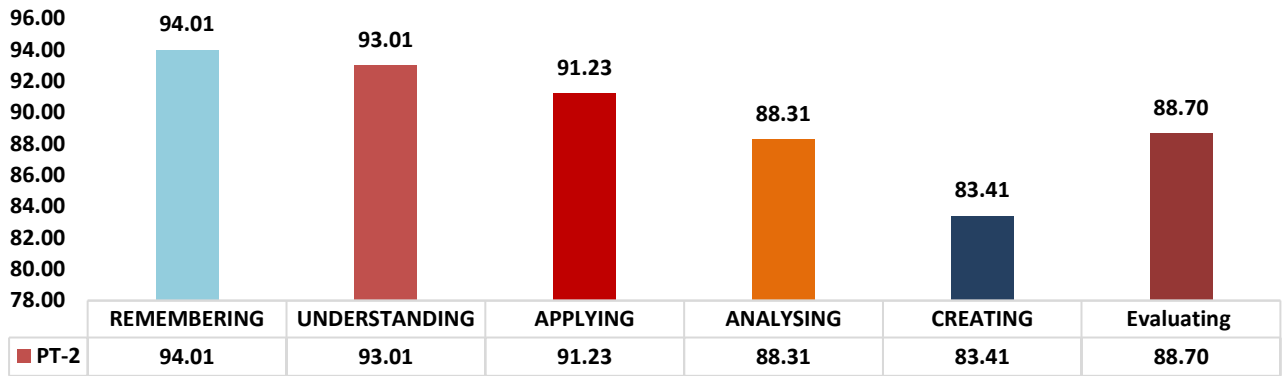
Topic: Monkey Trouble, The Fly - Poem



RANGE TABLE

0 to 8	1.00
8 to 16	2.00
16 to 24	6.00
24 to 32	11.00
32 to 40	141.00

Averages according to Blooms Taxonomy



CRITICAL QUESTIONS

Q7. People in villages use its **twigs** for brushing teeth.

[Analyzing] [Difficult]

Identify the picture which resembles a **twig**.

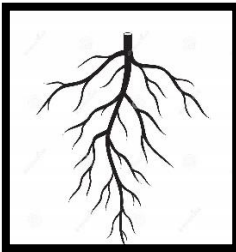


a.



b.

c.



d.



18.01% Children answered this question incorrectly.

Remedial measures:
The children will be shown a twig live and explained about it.

Q16 The words in the picture represent _____

[Applying] [Medium]



12.49% children have answered this question incorrectly.

Remedial measure: The teacher discusses and gives examples of abstract nouns.

a) Common nouns b) proper nouns c) collective nouns d) abstract nouns	
Q21. Write a short paragraph on “My cozy (comfortable) place in my sweet home” [60 to 80 words].	16.59% children answer this question incorrectly. Remedial measure: The teacher explains about the topic in the class.
Q24. How did the poet compare dewdrop and the hair in the second stanza? [Evaluating] [Difficult]	13.20% children have answered this question incorrectly. Remedial measure: The teacher explains the stanza once again to the children.
Q26. How did the second and third supermen boast in front of the handsome stranger? [Analyzing][Medium]	15.03 % children have answered this incorrectly. Remedial measure: The teacher explains how to answer this question clearly in the class.

SECTION WISE AVERAGES:

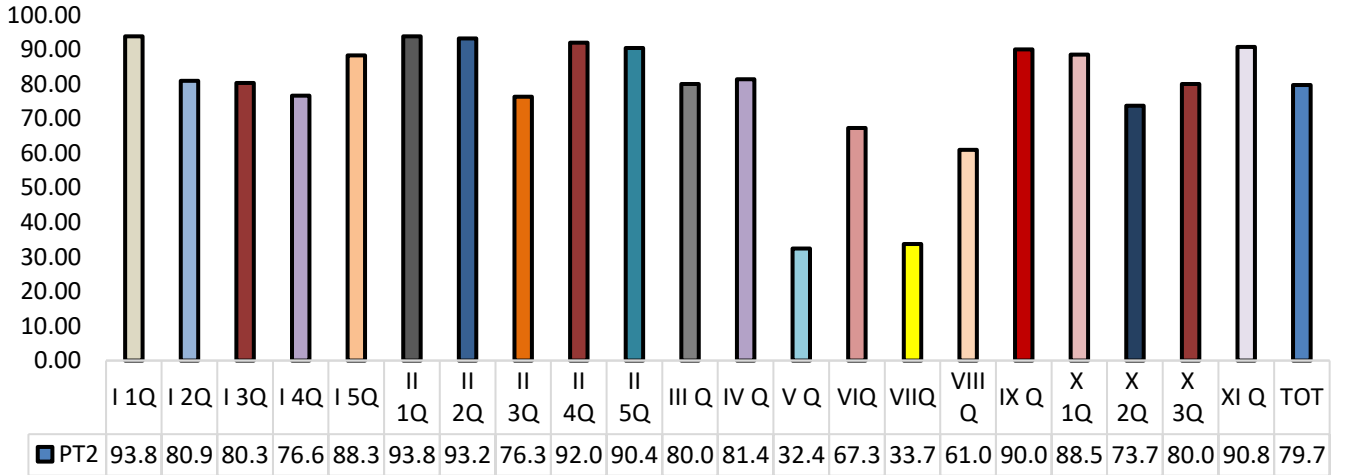
Class	Percentage
V A	88.20%
V B	84.96%
V C	90.73 %
V D	90.87%
V E	80.84

Overall – 88.7%

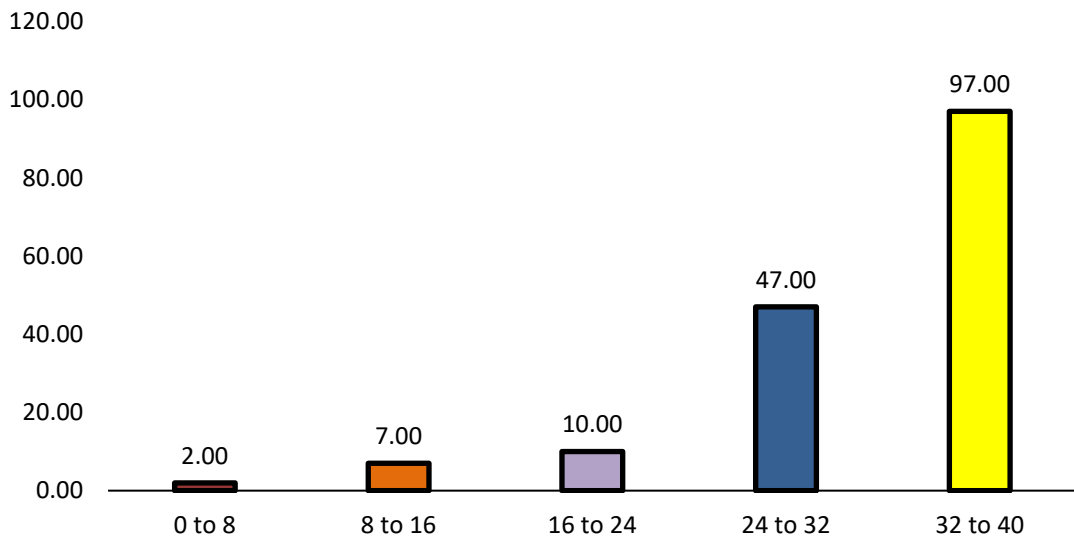
PERIODIC TEST 2 ANALYSIS HINDI CLASS 5(August 24th)

पाठ- 1.राख की रस्सी 2.फसलों के त्योहार

QUESTION WISE ANALYSIS

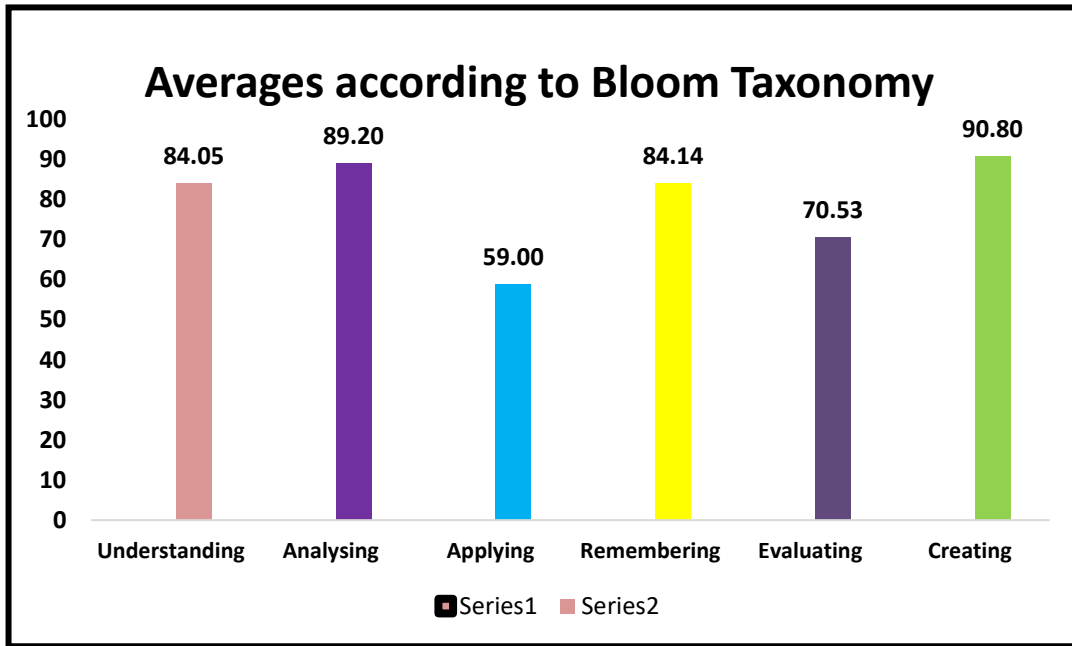


RANGE GRAPH



RANGE TABLE

0 to 8	2.00
8 to 16	7.00
16 to 24	10.00
24 to 32	47.00
32 to 40	97.00



CRITICAL QUESTIONS

<p>5. इन शब्दों के संज्ञा के भेद लिखिए । क .दिल्ली ख.दूध ग.उदास घ.फल</p>	<p>67.56% Children answered this question incorrectly. Remedial measures- From the grammar the question will be explained and ask them to answer.</p>
<p>6.दिए गए शब्दों के पर्यायवाची शब्द लिखिए।</p>	<p>32.67% Children answered this question incorrectly. Remedial measures- From the grammar the question will be explained and ask them to answer</p>
<p>7. दिए गए वक्यों को अपने व्यावहारिक भाषा में लिखिए।</p>	<p>66.26%Children answered this question incorrectly. Remedial measures- From the lesson the question will be explained and ask them to answer</p>
<p>8.जिनके पास घड़ी नहीं होती वे समय का अनुमान किस तरह से लगाते हैं?</p>	<p>39%Children answered this question incorrectly. Remedial measures- From the lesson Question and answer the question will be explained and ask them to answer and practice well.</p>

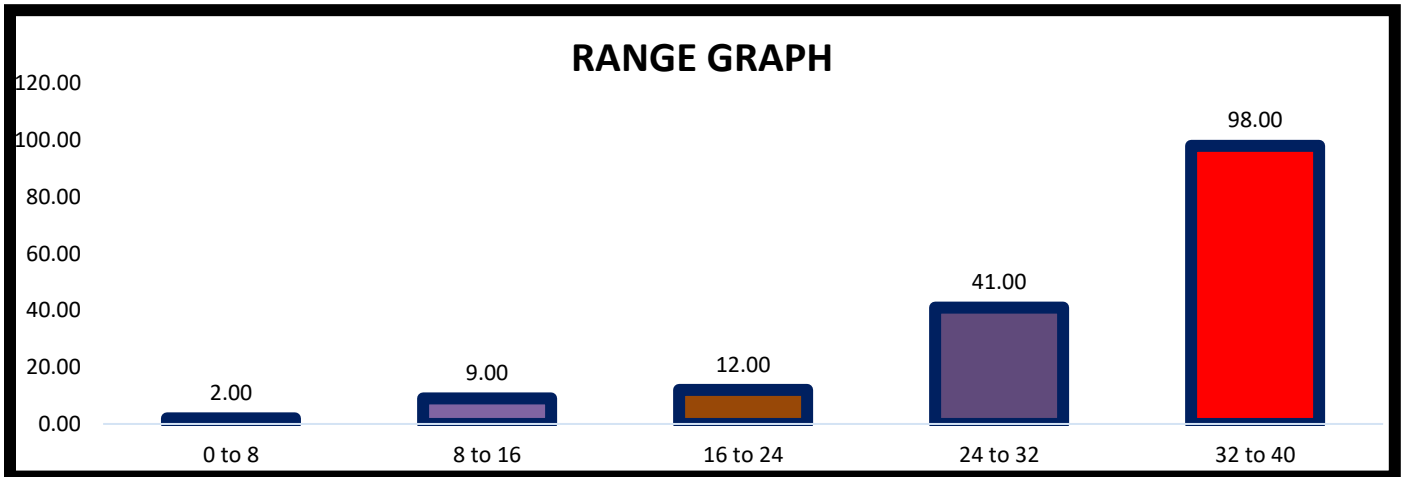
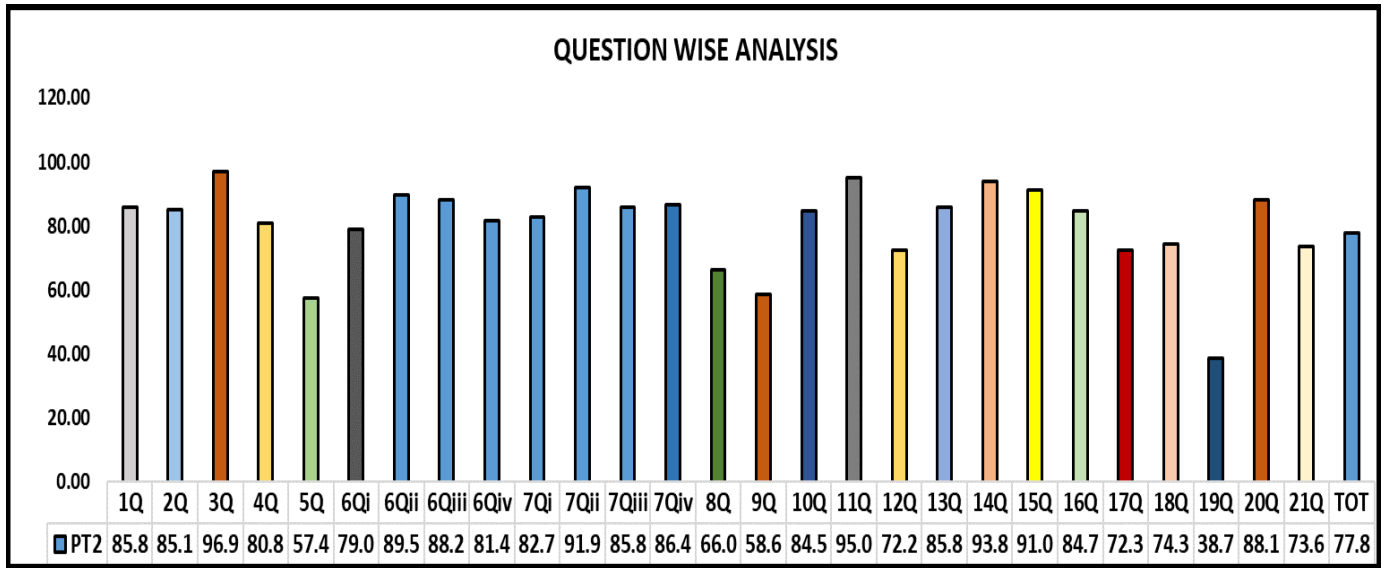
Section wise percentages

Class	Percentage
V A	81.17%
V B	81.56%
V C	80.14 %
V D	80.25%
V E	75.64 %
Overall	79.75 %

PERIODIC TEST 2 ANALYSIS MATH CLASS 5(August 27th)

Topic: Ch-2 Addition and Subtraction

Ch-3 Multiplication, Division, Average and Unitary method.



RANGE TABLE

0 to 8	2.00
8 to 16	9.00
16 to 24	12.00
24 to 32	41.00
32 to 40	98.00

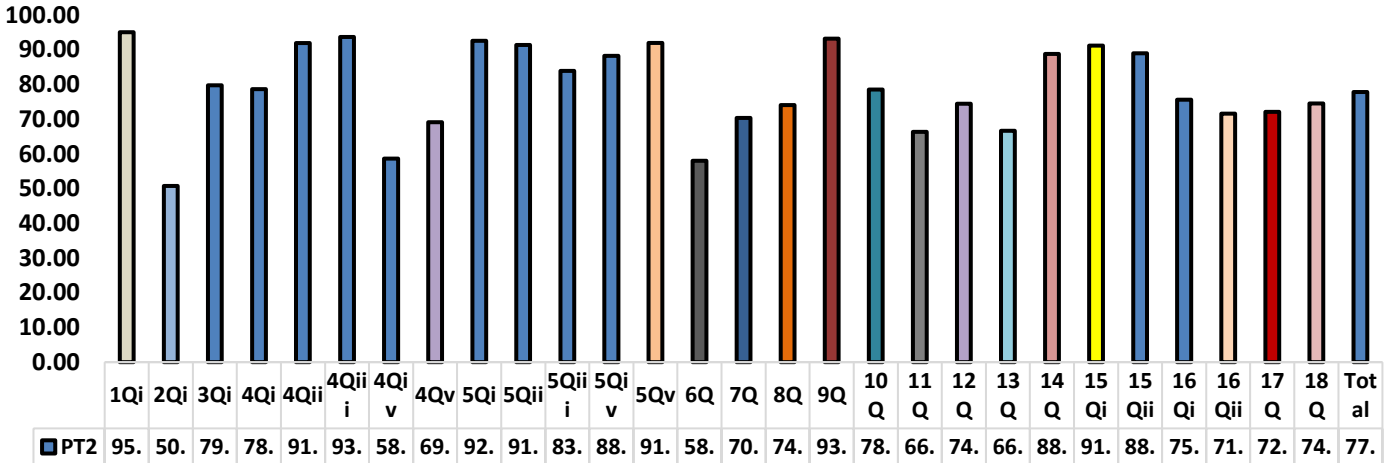
<p>19. Is 99 = IC? <u>Explain</u> appropriately. (Analysing) (HOTS)</p>	<p>Q 19 (3-mark question): 61.21% students were answered incorrectly.</p> <p>Most of the children just wrote yes or no without explanation.</p> <p>Remedial measure: revisit the properties of Roman numerals once again with examples</p>

Section wise Averages

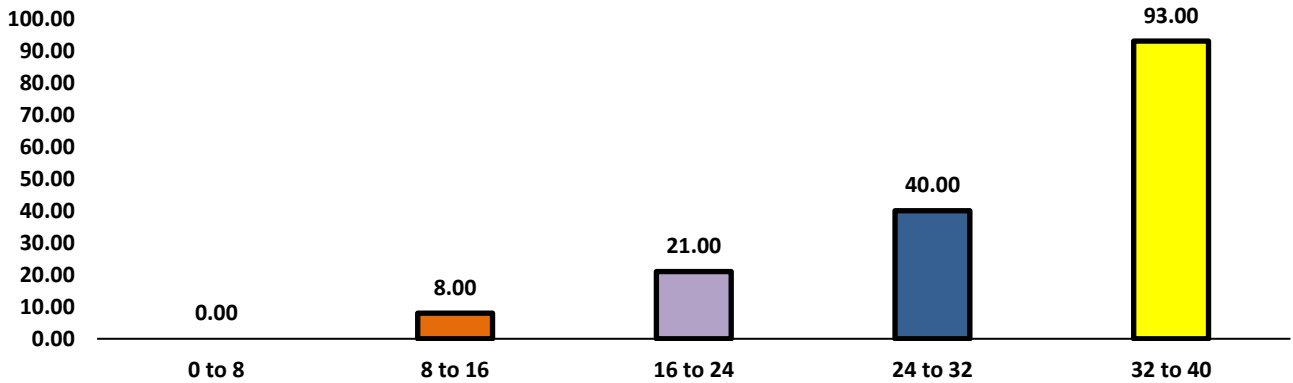
Class	Percentage
V A	76.14%
V B	76.09%
V C	83.89 %
V D	75.74%
V E	77.7 %
Overall	77.91 %

PERIODIC TEST 2 ANALYSIS SCIENCE CLASS 5(August 28th)
Topics: Name of the lessons: Soil Erosion and Conservation
Conserving our Environment

QUESTION WISE ANALYSIS

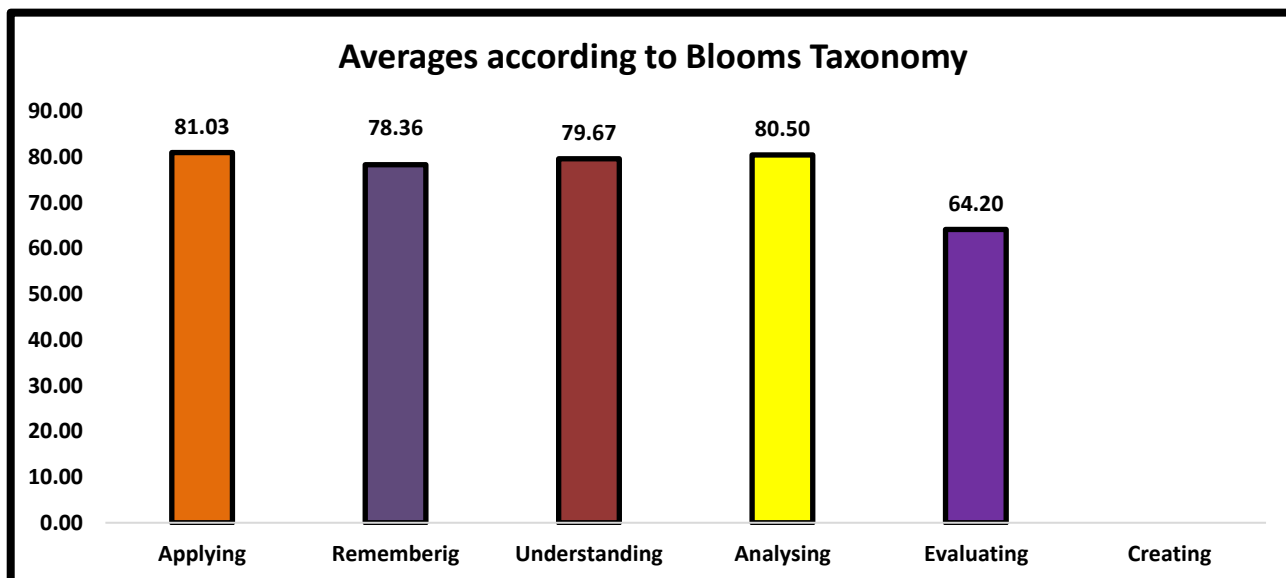


RANGE GRAPH



RANGE TABLE

0 to 8	0.00
8 to 16	8.00
16 to 24	21.00
24 to 32	40.00
32 to 40	93.00



CRITICAL QUESTIONS

Q2. i (1/2 -Mark question): Fill in the blanks with the suitable words:
 i. Carbon dioxide and other gases that trap the Sun's heat and help maintain a comfortable temperature are called _____ gases. (Applying). Children were unable to identify the gases responsible for maintaining normal temperatures.

4.(iv) (1-Mark question): What should we do when we go to the market, if we want to reuse? (Analysing). Many children were confused in identifying the 4th R from the passage given.

- (a) use plastic bags
- (b) use cloth bags
- (c) use a basket
- (d) use paper bag.

6. (1-Mark question): Assertion (A): Soil erosion is a man-made phenomenon.
 Reason (R): Soil erosion is caused due to deforestation, overgrazing etc.

- (a) Both A and R are true, and R is correct explanation of the A.

Remedial Measure: Will explain in the class by showing a short video on **GLOBAL WARMING- ITS EFFECTS**, also provide a worksheet on this concept and conduct a poll.

Remedial Measure: Will explain the concept of 4 R' s in the class, and also show the importance and usage of eco-friendly materials without effecting the environment through a video by the people.

Remedial measure: Will explain in the class the term **SOIL EROSION** caused through **HUMANS** and also state how badly it effected the soil by showing visually **PPT** and video, also provide the worksheet on this concept and conduct a poll

(b) Both A and R are true, but R is not the correct explanation of the A.

(c) A is true, but R is false.

(d) A is false, but R is true. (Evaluating)

Many children could not make the difference between man-made and natural process..

11.(2- Mark question): Complete the pairs. (Applying)

a. Hills: Erosion by water :: Deserts:

b. Afforestation: Soil conservation:: Deforestation: _____. Many children could not follow the pattern.

13.(2-Mark question): How do the following help in reducing soil erosion?

a. River embankments

b. Soil cover (Remembering) Many children did not read the question and understood the hidden meaning in it.

Remedial measure: Will explain in the class the different ways of soil erosion in which deforestation and deserts happens to be the most important effects of soil erosion through wind and cutting the trees.

Remedial measure: Will explain in the class the ways of soil conservation in which river embankments and soil cover were the important soil conservation techniques to the children

Section wise Averages

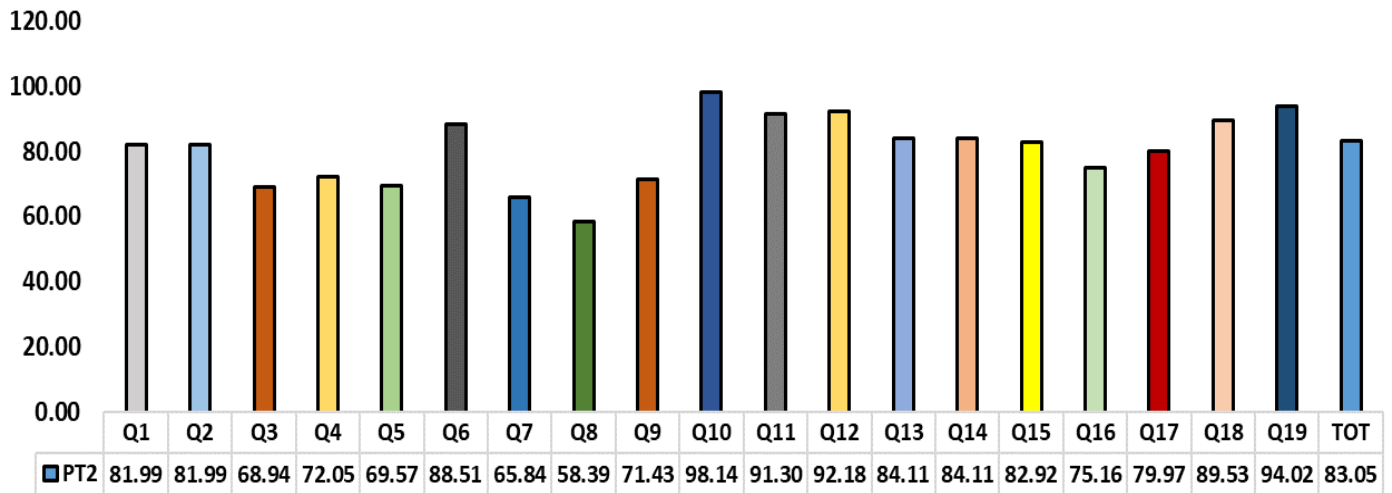
Class	Percentage
V A	78.79%
V B	74.79%
V C	79.73 %
V D	78.73%
V E	76.88 %
Overall	78.07 %

PERIODIC TEST 2 ANALYSIS SOCIAL CLASS 5 (August 25th)

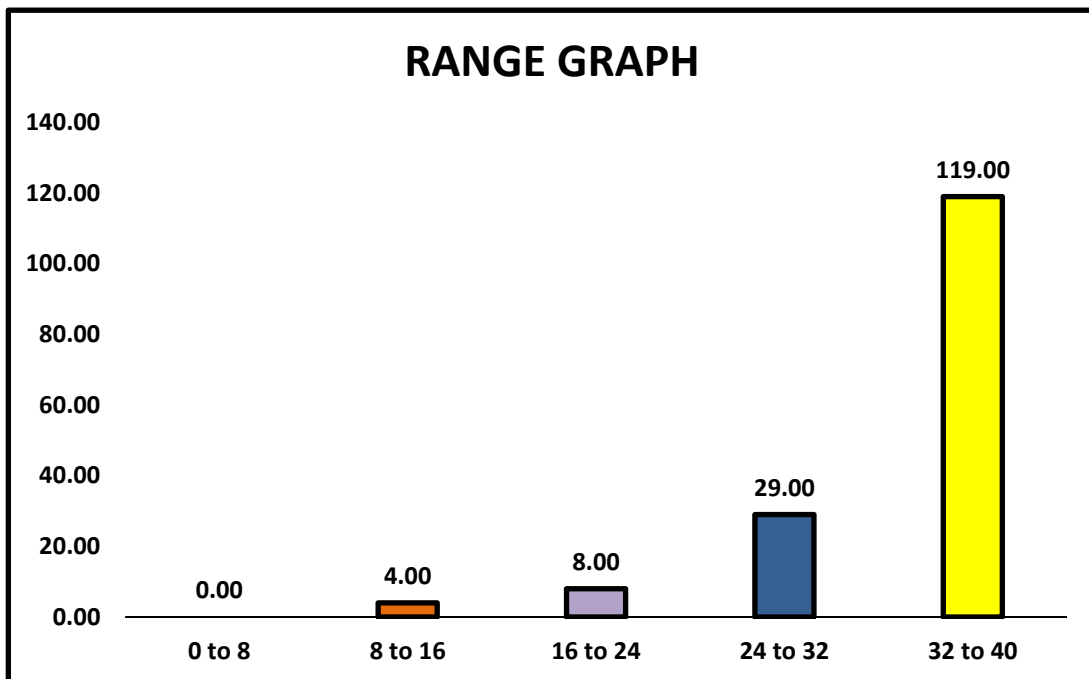
Topics: Le-1 Locating places on a globe

Le-2 Rocks and Minerals

QUESTION WISE ANALYSIS



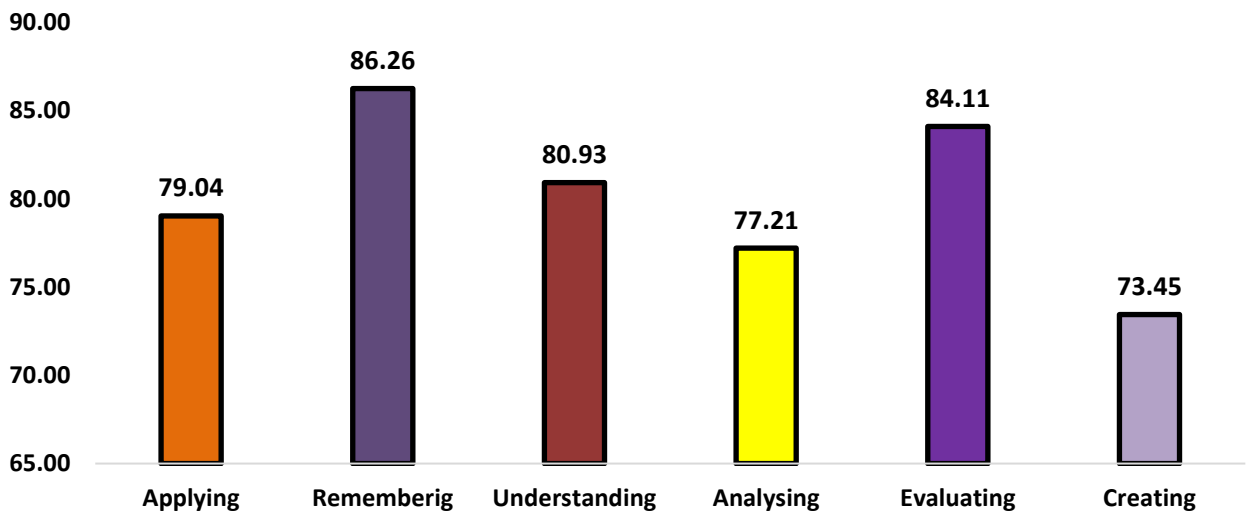
RANGE GRAPH







RANGE TABLE

Range	No. of students
0 - 8	0
8 -16	4
16 – 24	8
24 – 32	29
32-40	119

Averages according to Blooms Taxonomy



CRITICAL QUESTIONS

<p>8Q.[Creating] 1m Rewrite the sentence correctly. A grid is a network of lines crossing each other to form triangle or cone.</p>	<p>Remedial measure : The concept of grid will be revisited in the class by using globe and by practicing globe grid diagram in H.W book .</p>
<p>7Q.[Remembering] 1m Complete the pair. Meridians: _____:: Parallels : complete circles.</p>	<p>Remedial measure: The concept of meridians in the shape of semi-circle will be addressed in the class by giving more examples of semi-circular objects like umbrella ,rainbow, mushroom and for complete circles like clock, biscuit ball etc.</p>
<p>3Q.[Analyzing]1m In the question below, there are two statements marked as Assertion [A] and Reason [R]. Read the statements and choose the correct option. Assertion [A] The vertical and horizontal lines form a network on the globe. It is called as grid. Reason [R] The point is marked as the point of intersection of the relevant horizontal and vertical lines (a) Both A and R are true (b) Both A and R are false (c) Only A is true (d) Only R is true.</p>	<p>Remedial measure : This concept will be explained once again with the help of PPT in the class to understand the topic of global grid and a poll will be conducted to ensure the topic is understood.</p>
<p>5Q.[Understanding] 1m Look at the rocks in the given figure and choose the correct answer</p> <div style="display: flex; justify-content: space-around; align-items: center;"> <div style="text-align: center;">  <p>Granite</p> </div> <div style="text-align: center;">  <p>Obsidian</p> </div> </div> <div style="display: flex; justify-content: space-around; align-items: center; margin-top: 10px;"> <div style="text-align: center;">  <p>Pumice</p> </div> <div style="text-align: center;">  <p>Rhyolite</p> </div> </div>	<p>Remedial measures: The concept will be revisited in the class to understand the uses of rocks and a quiz will be conducted to ensure the topic is understood.</p>

Ancient humans used _____
rocks to make tools.

Section wise percentages

Class	Percentage
V A	81.7%
V B	83.36%
V C	85.38 %
V D	83.26%
V E	81.84 %
Overall	83.11 %