

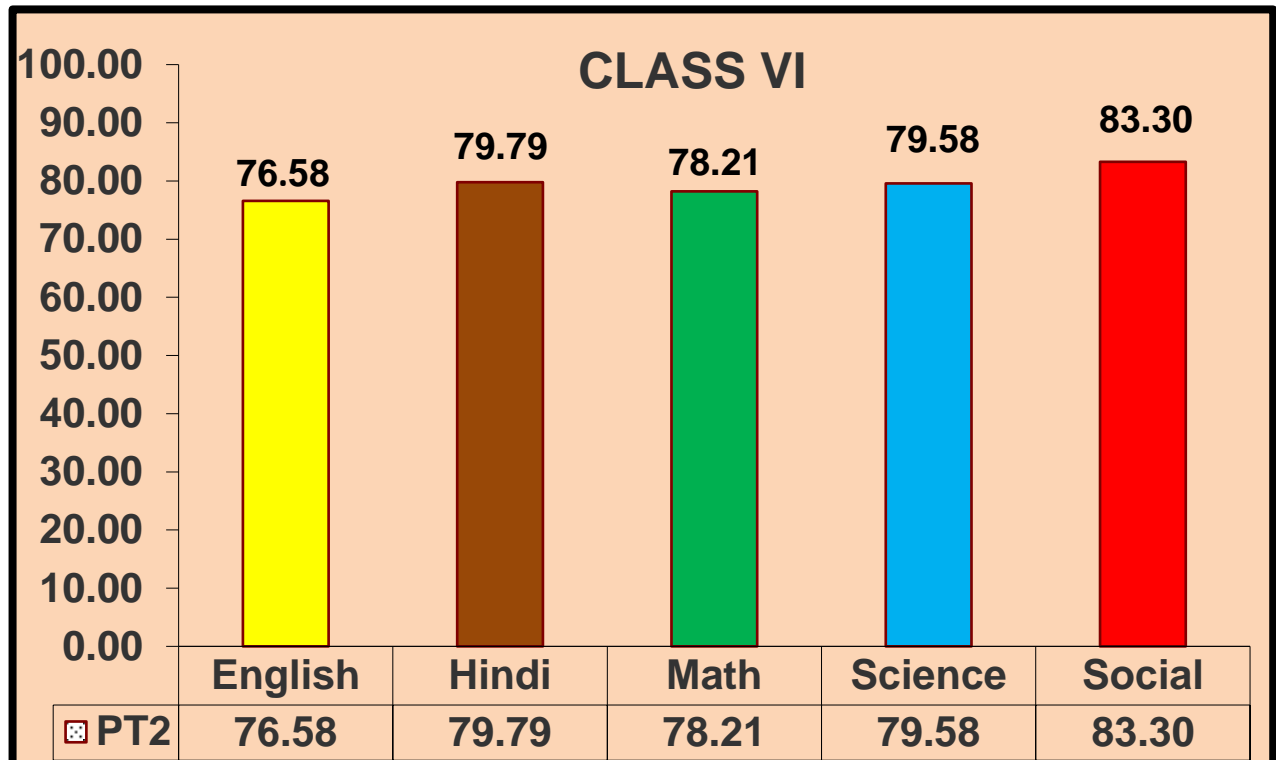


SANGHAMITRA SCHOOL

CLASS – VI PERIODIC TEST – II RESULT ANALYSIS

- Exam Dates: 24.08.2021 to 28.08.2021
- No. of students – 164
- Type of Test: Subjective
- Marks - 40
- Time Allotted: 1 ½ Hrs

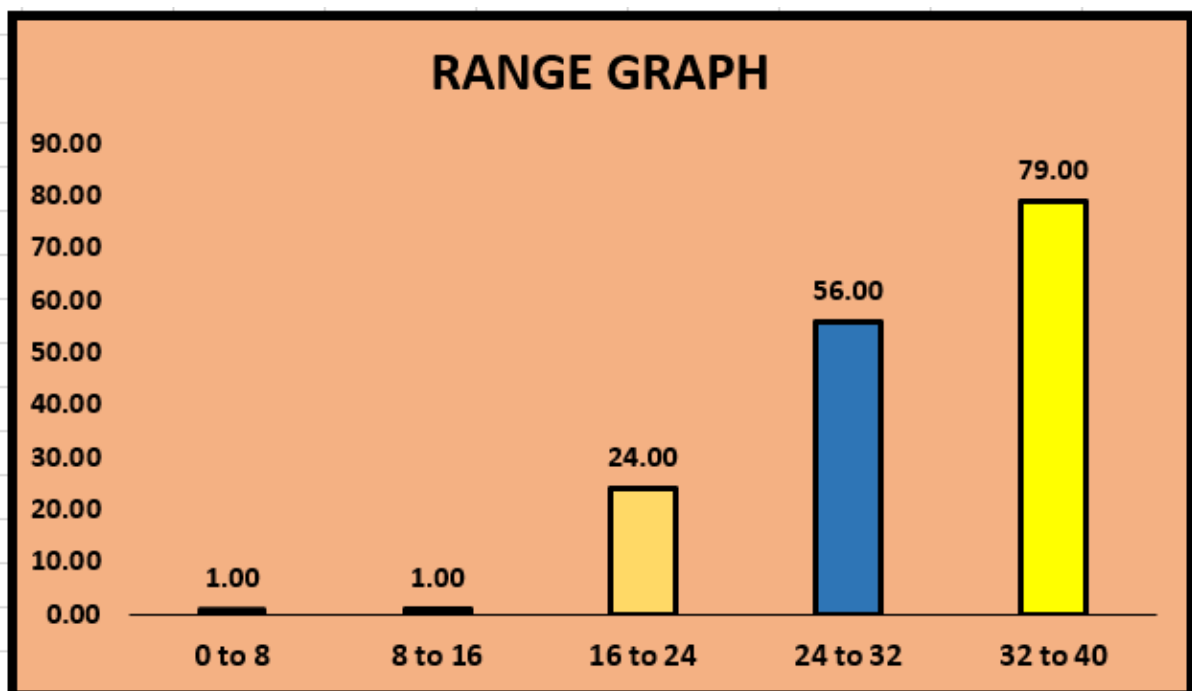
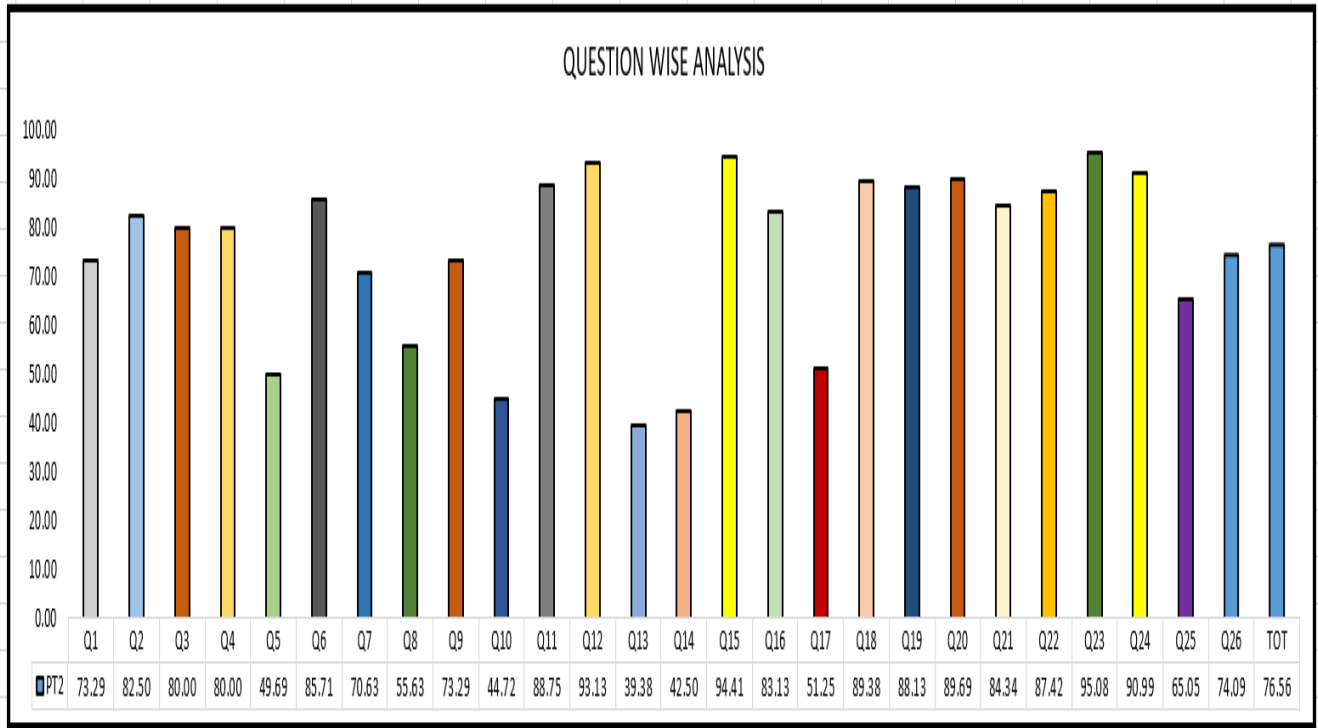
GRAPHICAL REPRESENTATION



PERIODIC TEST 2 ANALYSIS ENGLISH CLASS 6 (26th August 2021)

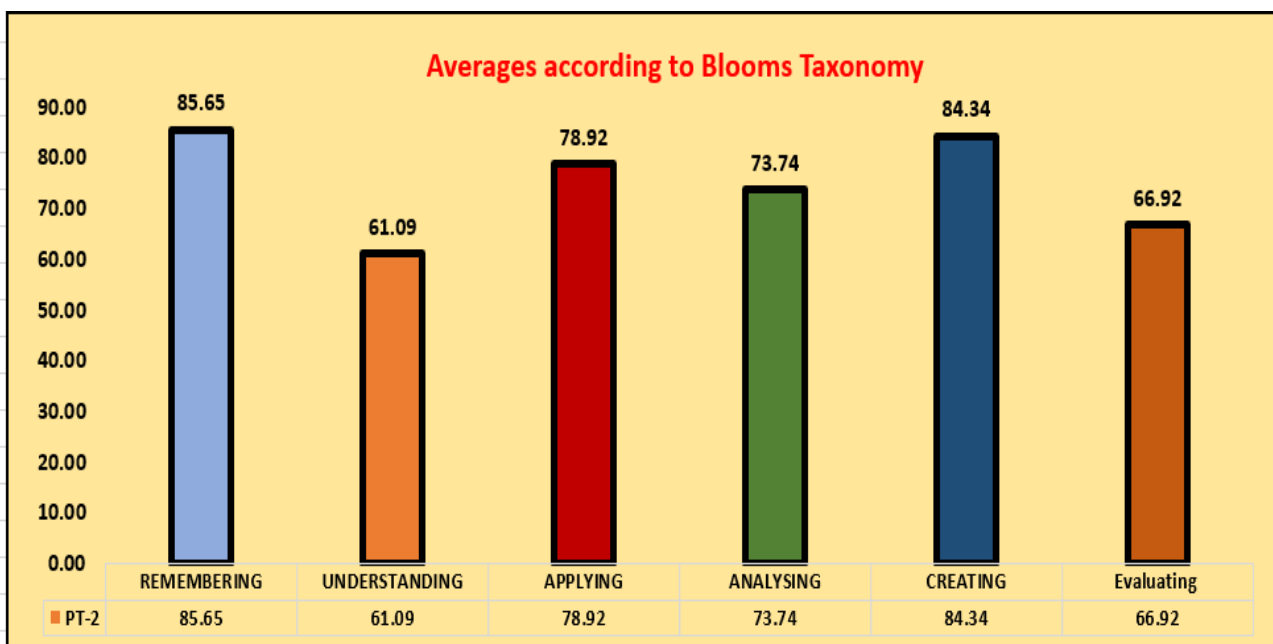
Topics: Le-1 Operation Black Beard

Le-2 Travelling with Grandfather's zoo



RANGE TABLE

Range	No. of students
0 - 8	1
8 -16	1
16 – 24	24
24 – 32	56
32-40	79



CRITICAL QUESTIONS

13. 'Hiding' means the same as _____
 (Understanding) (Mots)

- a. Beating
- b. Concealing
- c. Disappearing
- d. Exposing

Remedial Measures

The concept of synonyms will be explained in the class with more examples.

<p>14. Pick out the word from the passage which means the opposite of ‘sensible’ _____ (Understanding). (Mots)</p> <p>a. Wise b. Foolish c. Stupid d. Silly</p>	<p>The concept will be revisited again in the class to understand Synonyms and Antonyms</p>
<p>Q 10. Choose the jumbled word which has the correct spelling. (creating) (Hots)</p> <p>(a) iamlnest (b) iamlenets (c) amilineste (d) milanetsei</p>	<p>The concept will be explained in the class with the help of examples.</p>
<p>Q 5. Papaya has many virtues that can contribute to our good health. Which of these statements is false? (Applying) (Mots)</p> <p>(a) It has a protein digesting enzyme. (b)It can digest 200 times its own weight in protein (c) It assesses the body by providing energy. (d)It has deficiency of gastric juice</p>	<p>The concept will be revisited and a sample passage will be given to help understand the contextual meaning.</p>

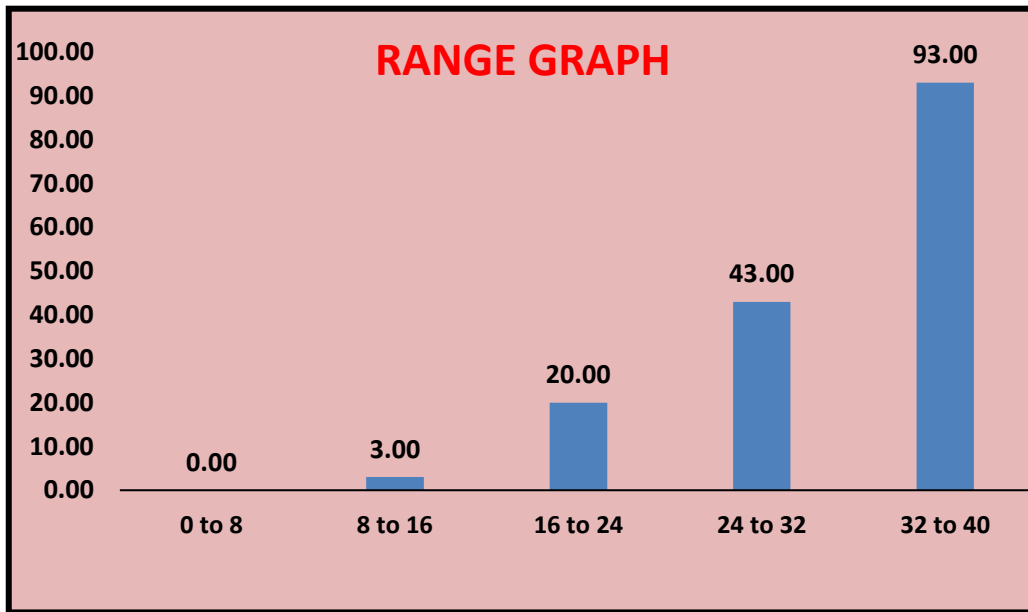
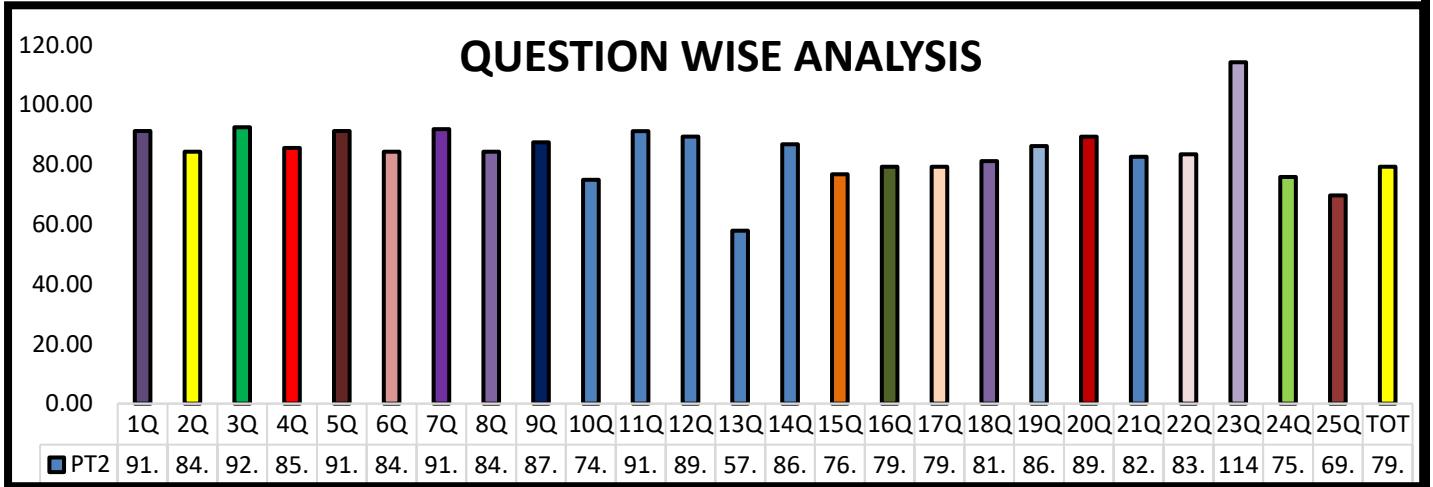
SECTION WISE AVERAGES:

Class	Percentage
VI A	77.82%
VI B	78.05%
VI C	76.76 %
VI D	77.09%
VI E	73.16 %

Overall – 76.57%

PERIODIC TEST 2 ANALYSIS HINDI CLASS 6(August 24th)

पाठ 1 वह चिड़िया जो, पाठ -2 बचपन



RANGE TABLE

0 to 8	0
8 to 16	3
16 to 24	20
24 to 32	43
32 to 40	93

CRITICAL QUESTIONS

प्र IV खाली स्थानों के लिए सही क्रिया-विशेषण शब्द चुनिए । (2x1=2 अंक)
(प्रयोगात्मक) (Applying)

1. टॉमी ----- से कुत्ते पर झपटा
क) धीरे-धीरे ख) सहमकर
ग) आराम घ) फुर्ती

100 children answered this question incorrectly.

Remedial measure: The definition of Kriya visashan will be explained in the class and a worksheet will be given to reinforce the concept.

प्र XII. निम्नलिखित चित्र का वर्णन कीजिए ।
(1x5=5 अंक)



83 children answered this question incorrectly.

Remedial measure: The concept will be revisited and Will make the entire class practice the concept in Home work notebook.

प्र XI. निम्नलिखित विषय पर विज्ञापन बनाइए ।
(1x5=5 अंक) (सृजनात्मक)

बाज़ार में एक नया दूधपेस्ट आया है, उस दूधपेस्ट पर एक आकर्षक विज्ञापन बनाइए।

80 children answered this question incorrectly.

Remedial measure: The format will be explained in the class and will make the children practice in the rough note book.

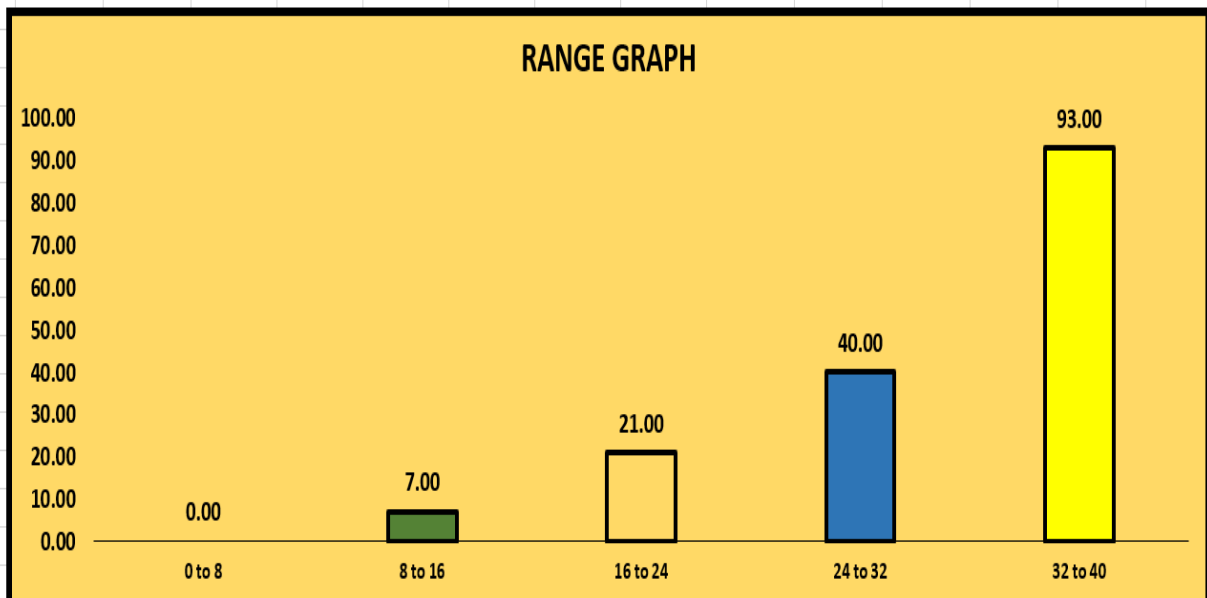
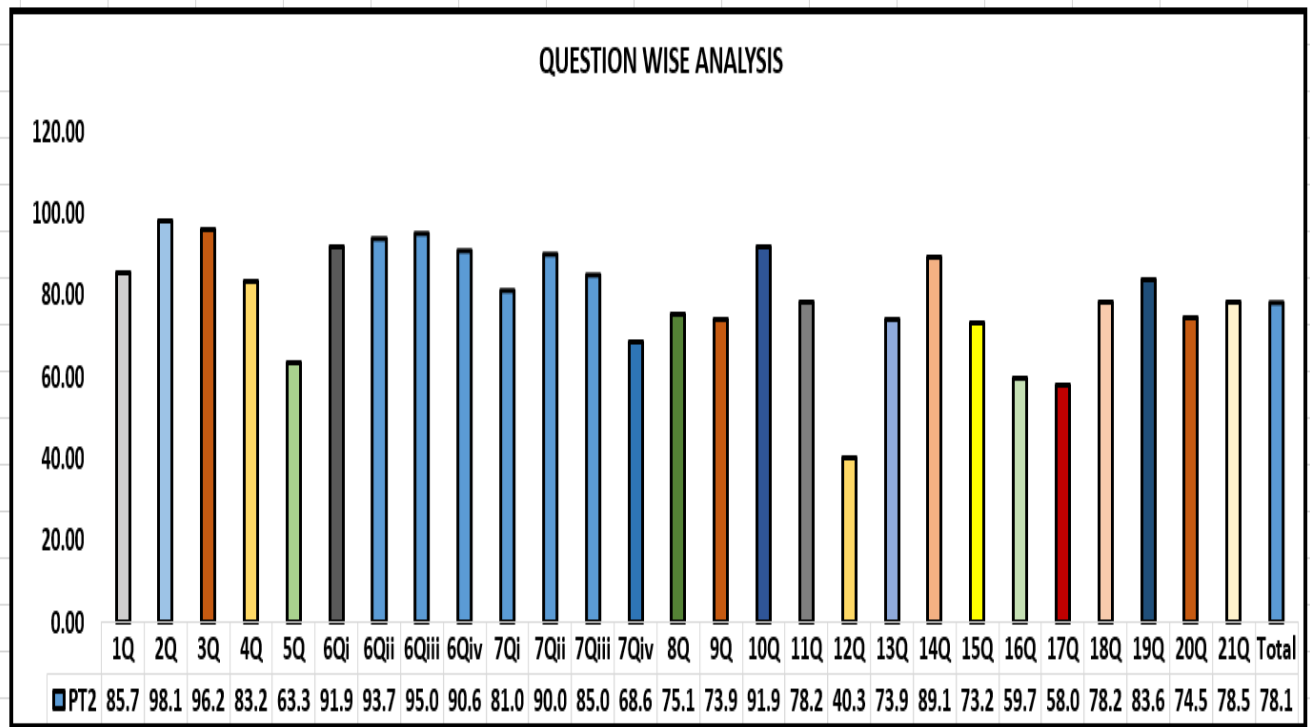
Section wise Averages

Class	Percentage
VI A	81.17%
VI B	81.56%
VI C	80.14 %
VI D	80.25%
VI E	75.64 %
Overall	79.7 %

PERIODIC TEST 2 ANALYSIS MATH CLASS 6 (August 27th)

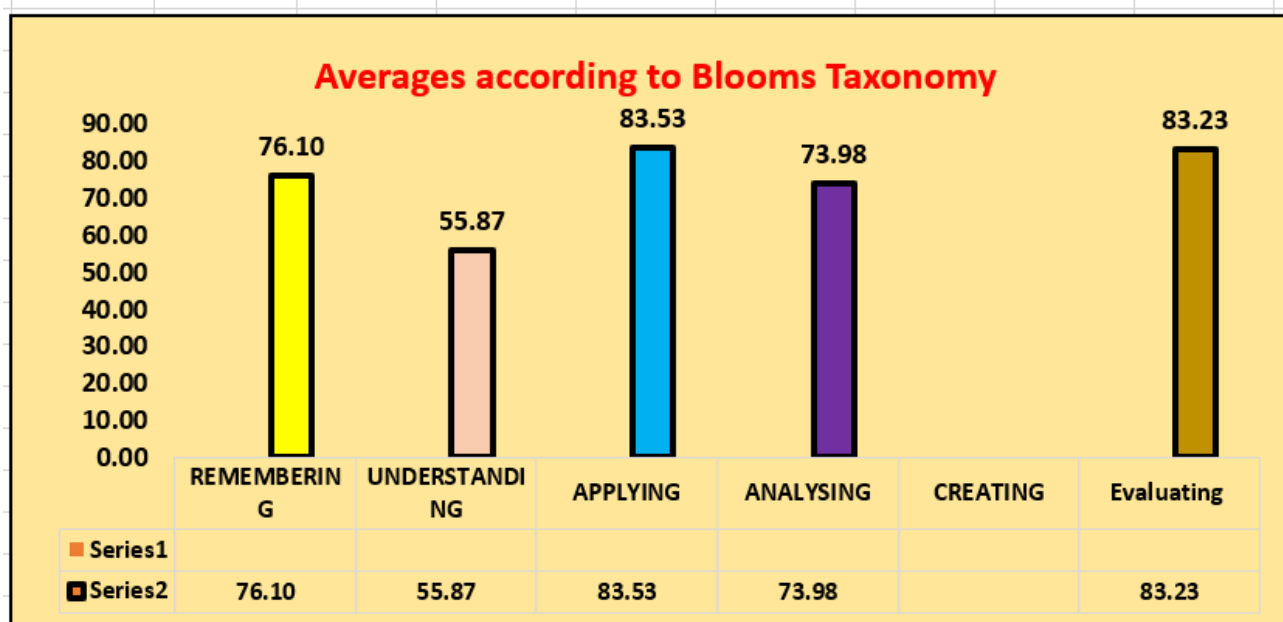
Topic : Knowing our numbers

Whole numbers



RANGE TABLE

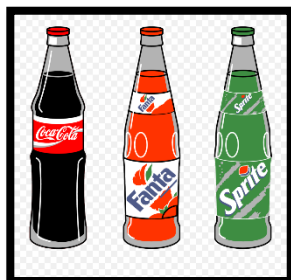
Range	No. of students
0 - 8	0
8 -16	7
16 – 24	21
24 – 32	40
32 – 40	93



CRITICAL QUESTIONS

Critical Questions	Remedial Measure
<p>12) There are ___ whole numbers between 42 and 77 (Remembering)</p>	<p>60 % of the students answered it incorrectly. The concept will be explained on a number line and a worksheet will be given to reinforce the concept.</p>

17) A cool drink manufacturing company produces 39,400 litres of soft drinks in a particular month. Calculate in how many bottles each of 200 ml can it be filled?
(Applying)



45% of the students answered it incorrectly.
Conversion table will be given and practice based on conversion of one unit to another is given.

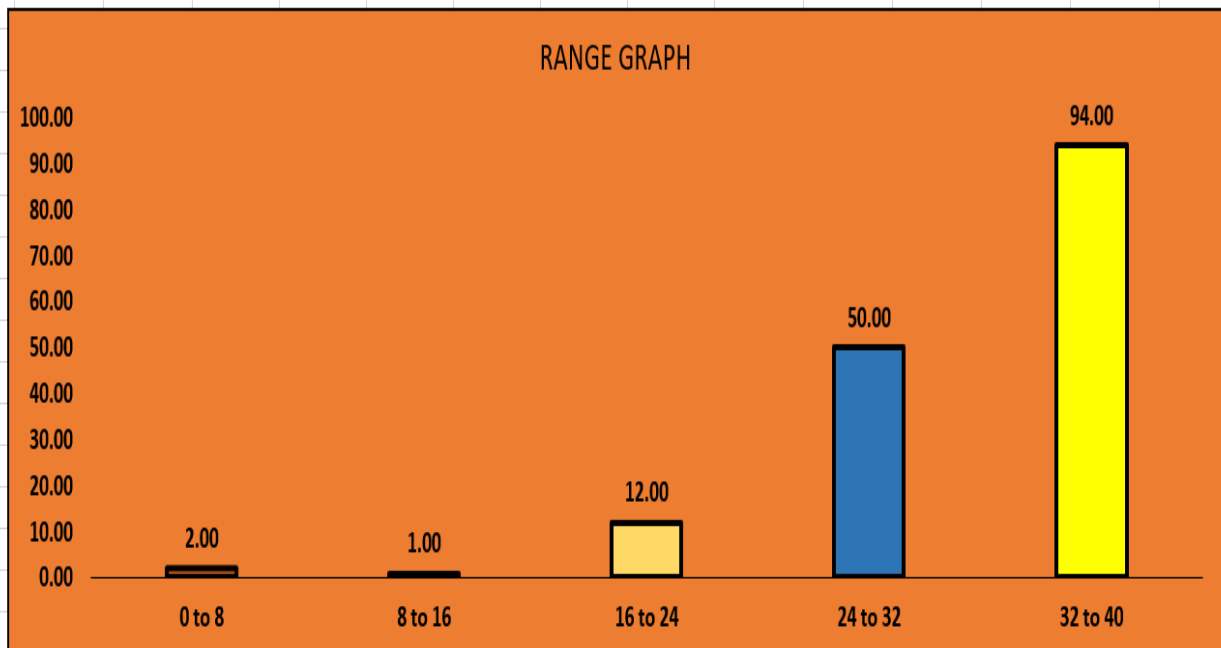
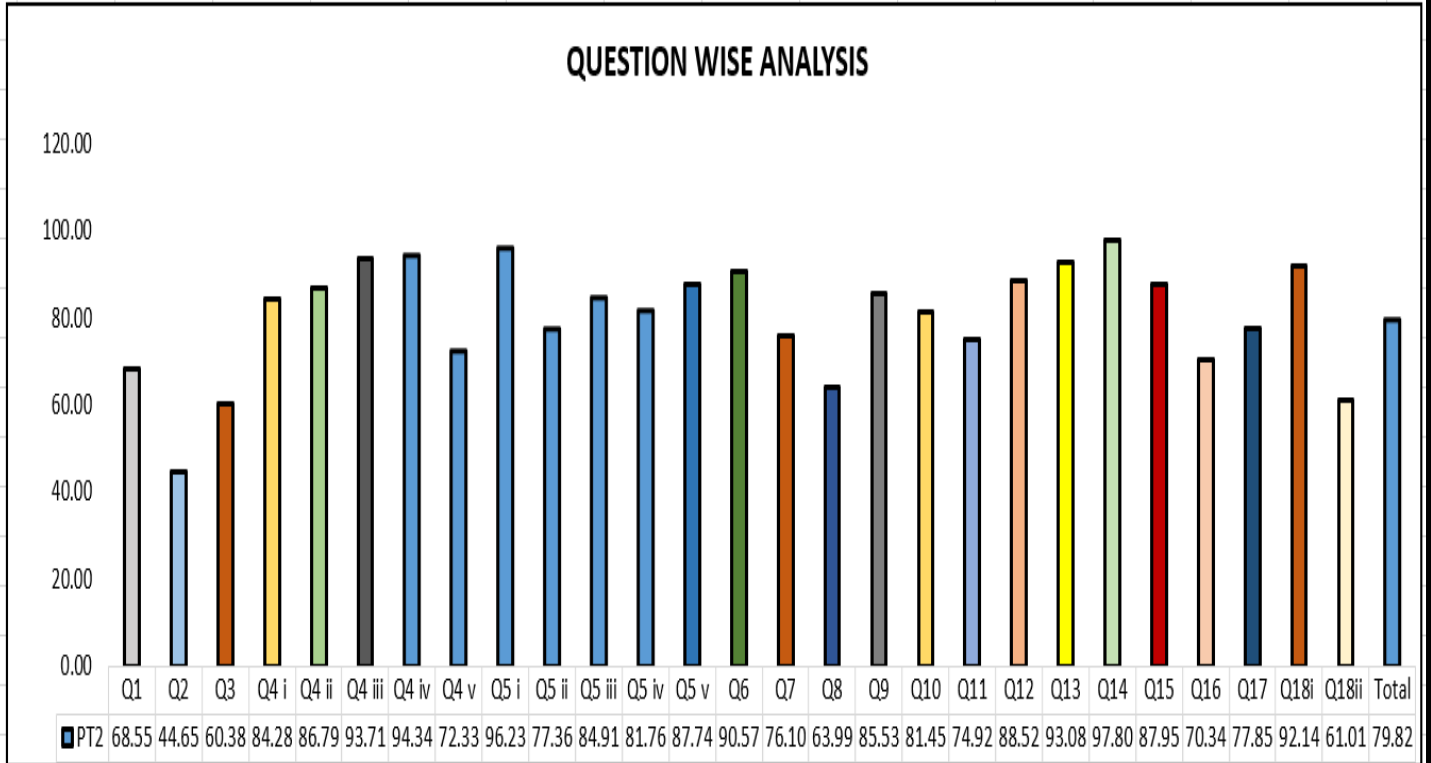
16. Write the predecessor of ninety lakh in words in Indian and International system of numeration. (Remembering)

40% of the students answered it incorrectly.
Successor and predecessor of large numbers will be reinforced with an activity sheet.

Section wise Averages

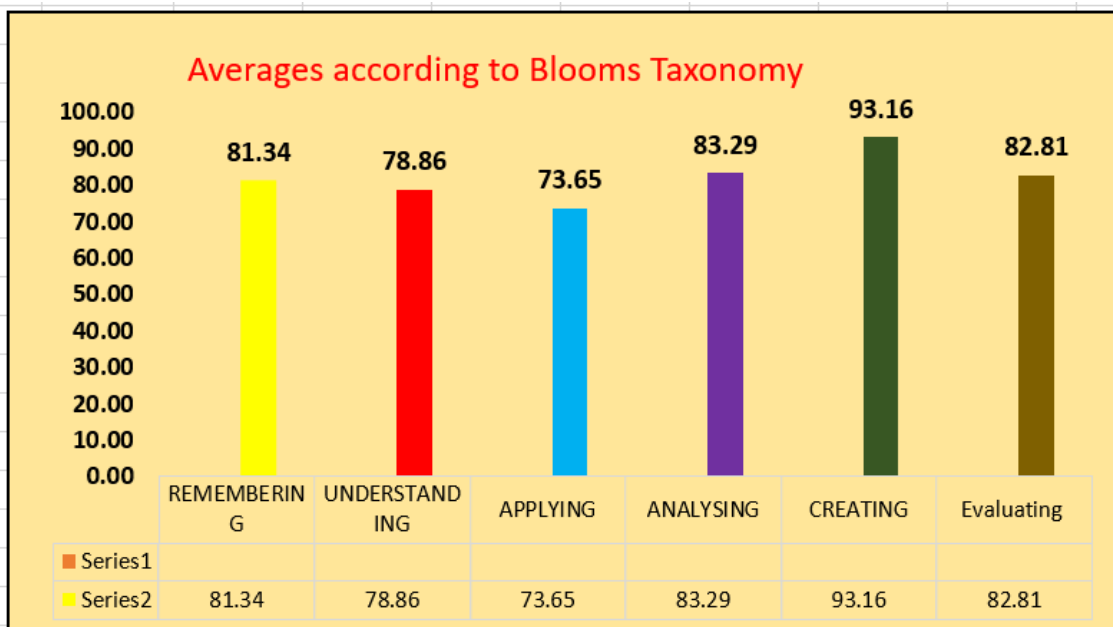
Class	Percentage
VI A	78.55%
VI B	80.04%
VI C	75.17 %
V ID	81.84%
VI E	75.47 %
Overall	78.2 %

PERIODIC TEST 2 ANALYSIS SCIENCE CLASS 6(August 28th)
Topics: Le-1 Science around you
Le-2 Sources of food.



RANGE TABLE

Range	No. of students
0 - 8	2
8 -16	1
16 – 24	12
24 – 32	50
32-40	94



CRITICAL QUESTIONS

Q2. When a clinical thermometer reads a temperature more than _____^oF, for a person, it is confirmed that he has fever. (Applying)



56% of the students answered incorrectly.

Remedial measure: Work sheet will be given with similar questions and concept is explained again with few more examples of same concept.

Q18. a). Mention the steps involved in scientific method and

39 % of students answered incorrectly the **b)** part of the question.

b). Explain the above steps with any one of your day to day activity.
(Application)

Remedial measure: Work sheet will be given with similar questions and concept is explained again with few more examples of day to day happenings.

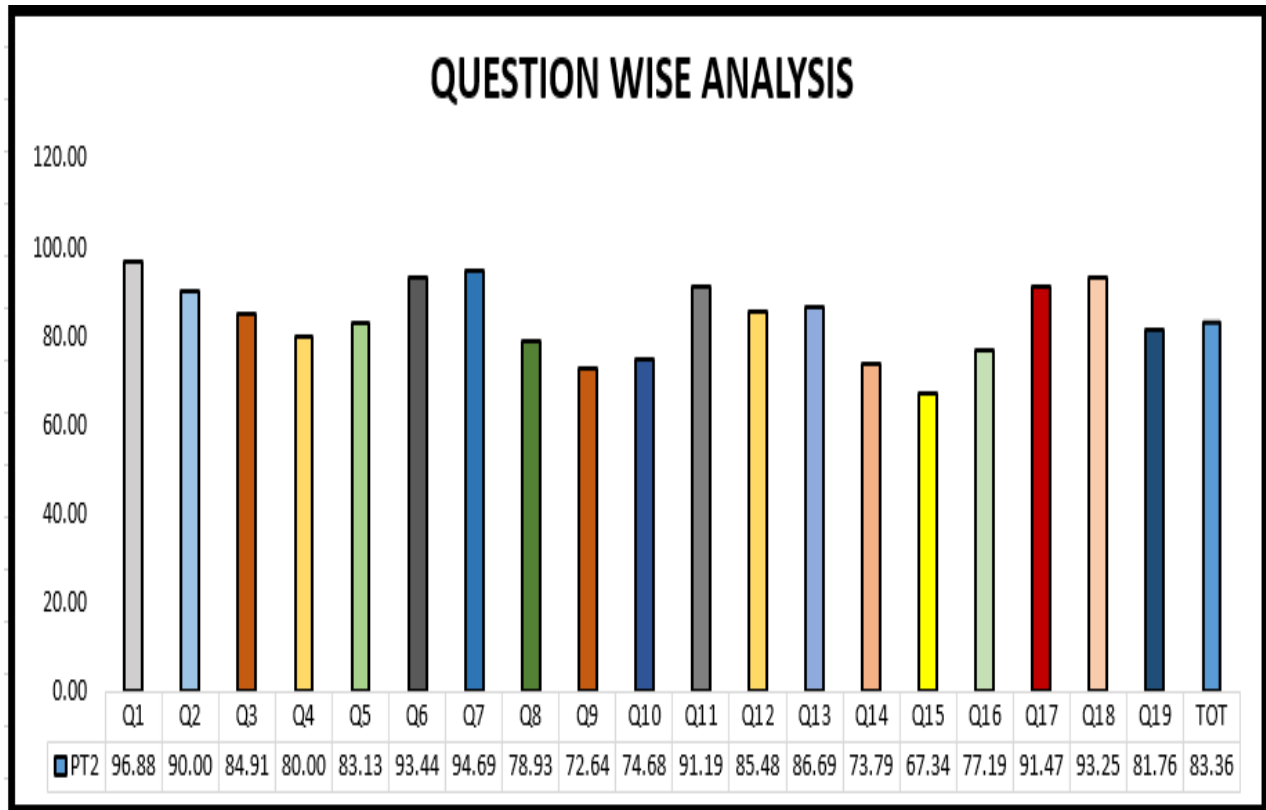
Section wise Averages

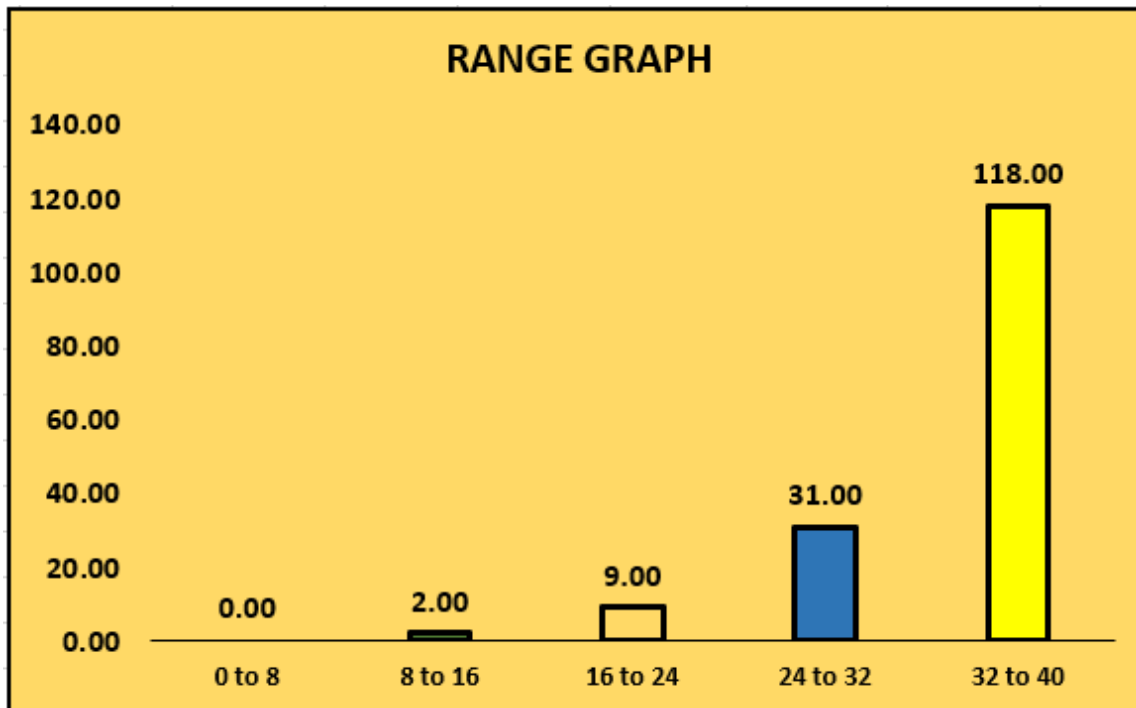
Class	Percentage
VI A	81.51%
VI B	81.21%
VI C	77.31 %
VI D	83.69%
VI E	74.17 %
Overall	79.68 %

PERIODIC TEST 2 ANALYSIS SOCIAL CLASS 6 (August 25th)

Topics : Le-20 Understanding diversity (Civics)

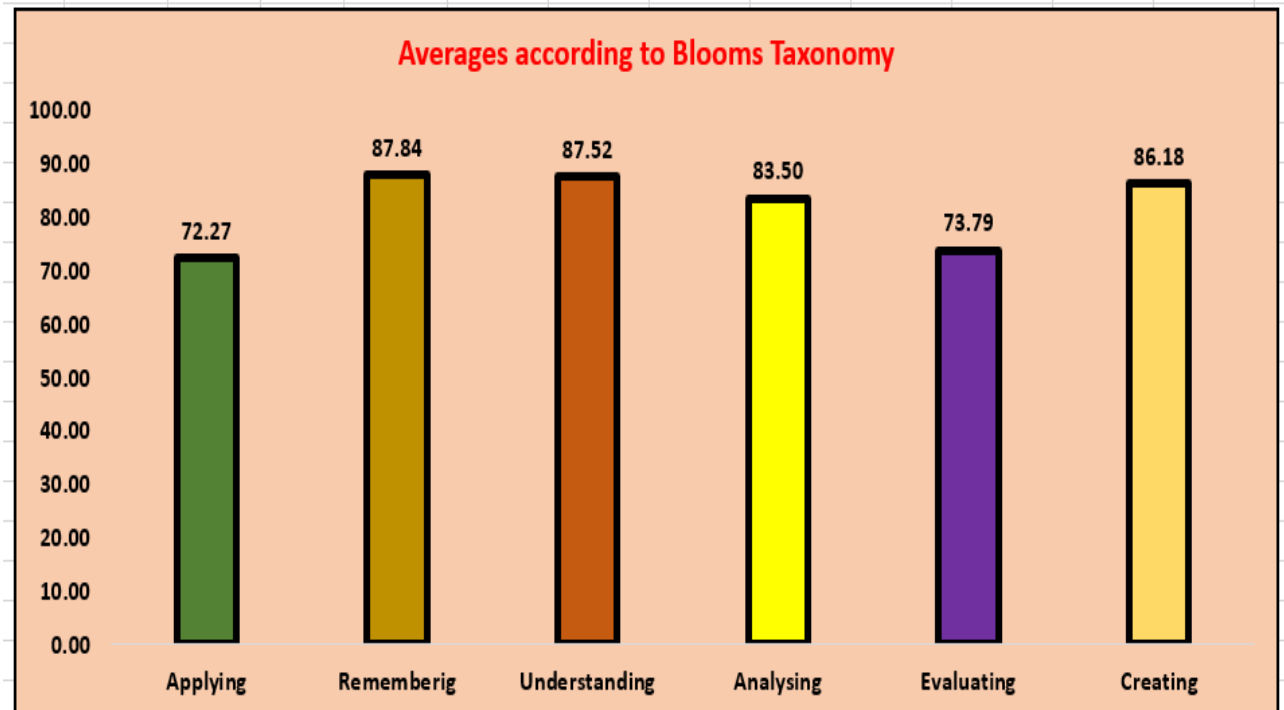
Le-13 A Globe , Latitudes and Longitudes(Geography)





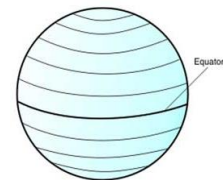
RANGE TABLE

Range	No. of students
0 - 8	0
8 -16	2
16 – 24	9
24 – 32	31
32-40	118



CRITICAL QUESTIONS

Q15/ (1 mark question): “Parallels of latitudes decrease in size as they move towards the poles”. Which of the following is accurate? ()



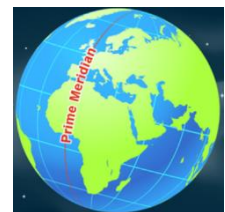
(a) as they run from East to West **(b) due to shape of Earth**

(c) as it determines the climate (d) Equator is in centre.

Remedial measure: Will reteach the topic by drawing the diagram of Earth and explain it to the children.

Q 9/ (1 mark question):

If it is Wednesday east of Prime Meridian, it is _____ day to the west of Prime meridian. ().



(a) Monday (b) Thursday (c) Tuesday (d) Sunday.

Remedial measure: Will explain the concept and conduct a poll to check if they concept is clear.

Q 14/(3 marks question):

Evaluate the time of 50 E longitude and 50 W, when it is 6am at GMT.

Remedial measure: Time calculation of a place will be explained in the class with more examples and step wise solving. Random questions will be asked to check if the child understood the time calculation of a place.

Q 10/ (1 mark question):

The _____ determines time of a place.

Remedial measure: The differences between parallels and meridians will be discussed and a poll will be conducted to check if child understood the topic

Section wise Averages

Class	Percentage
VI A	83.19%
VI B	83.24%
VI C	83.24 %
VI D	86.62%
VI E	80.19 %
Overall	83 %