

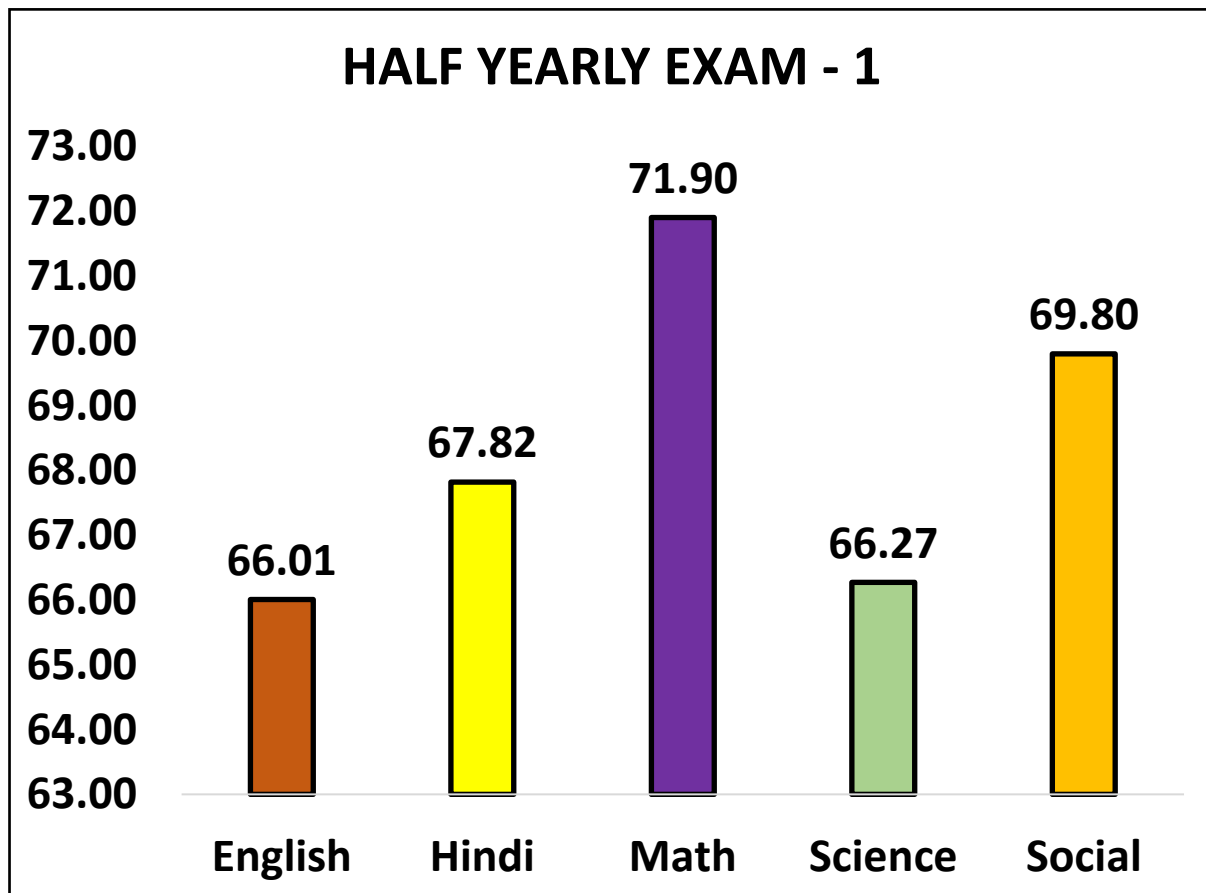


## SANGHAMITRA SCHOOL

### CLASS – X HALF YEARLY EXAM – I RESULT ANALYSIS

- Exam Dates: 21.10.2021 to 25.10.2021
- No. of students – 158
- Type of Test : MCQ ( 40 Questions)
- Marks - 40
- Time Allotted: 90 min.

#### GRAPHICAL REPRESENTATION



## ENGLISH RESULT ANALYSIS OF HALF YEARLY -1

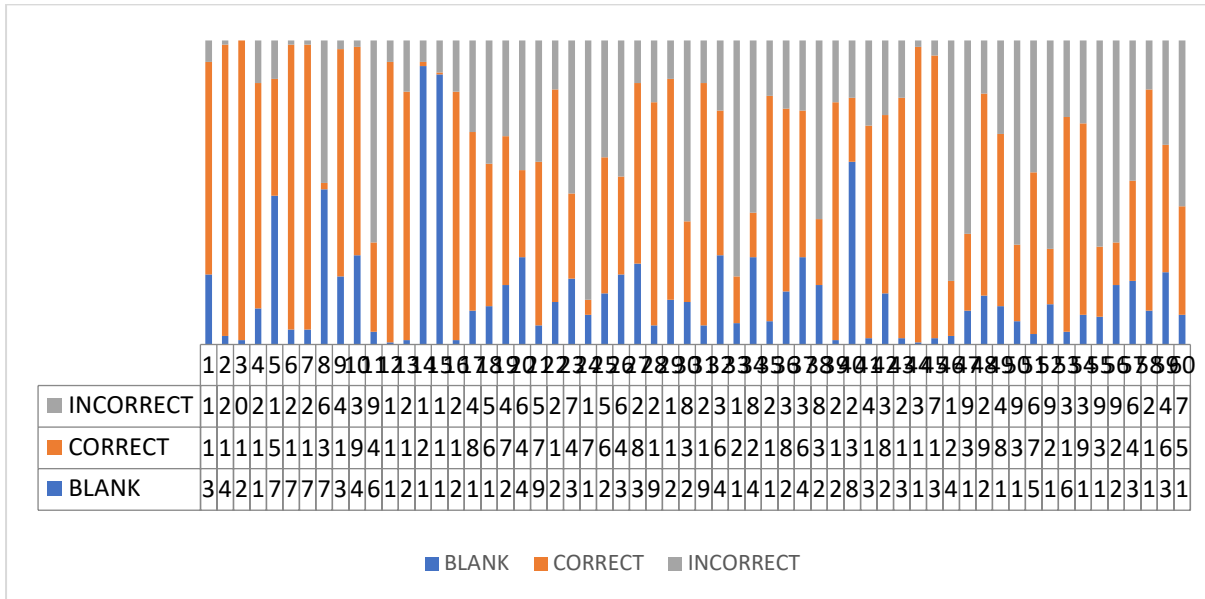
**SUBJECT: ENGLISH**

**CLASS: X**

**NO.OF STUDENTS PRESENT: 146**

**NO. OF STUDENTS ABSENT: 11**

### QUESTION-WISE ANALYSIS



### CRITICAL QUESTIONS

**Q.24 Ram as well as his brothers \_\_\_\_\_ coming today.**

- A. was**
- B. are**
- C. have been**
- D. is**

**CORRECT ANSWER**

**D. is**

**Remedial Measure**  
Teacher explains the concept and gives more examples. Practice paper will be given and discussed.

**Q.33 ANIMATED MY LIFE from the extract means:**

- A. affected his life**
- B. spirited his life**
- C. changed his life**
- D. challenged his life**

**CORRECT ANSWER**

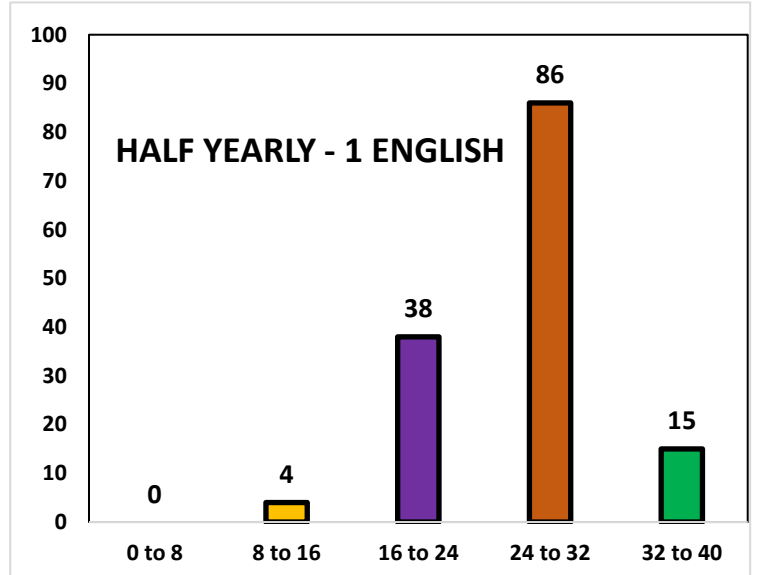
**B. spirited his life**

**Remedial Measure**  
Teacher will make children underline important phrases and explains the meaning according to the context.

### RANGE TABLE

<b>0-8</b>	<b>0</b>
<b>8-16</b>	<b>4</b>
<b>16-24</b>	<b>38</b>
<b>24-32</b>	<b>86</b>
<b>32-40</b>	<b>15</b>

### RANGE GRAPH



### SECTION WISE AVERAGES

	<b>A</b>	<b>B</b>	<b>C</b>	<b>D</b>	<b>Total</b>
<b>English</b>	<b>65.88</b>	<b>63.93</b>	<b>67.49</b>	<b>66.74</b>	<b>66.01%</b>

## HALF-YEARLY- 1 (Subject- Hindi) RESULT ANALYSIS

- No. of students – 157
- No. of students attempted the test – 146
- Absent – 11

### SECTIONWISE AVERAGES:

SECTION-A- 66.35%

SECTION-B- 65.06%

SECTION-C- 69.86%

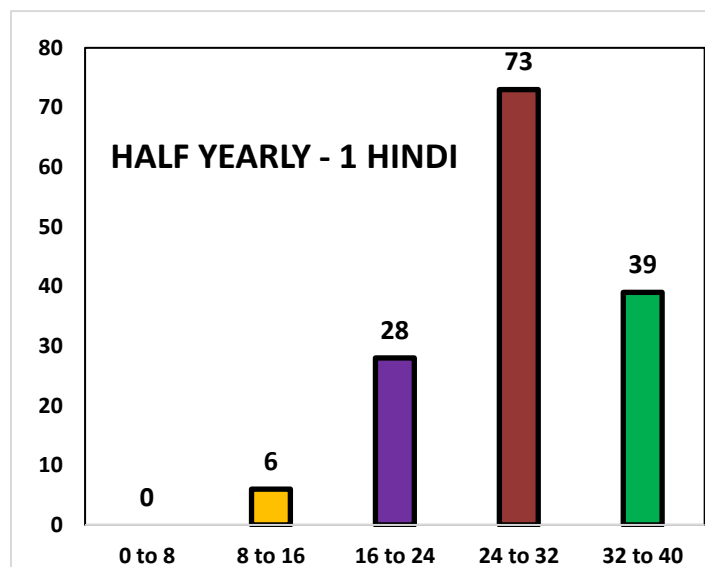
SECTION-D- 70. %

**OVERALL- 68 %**

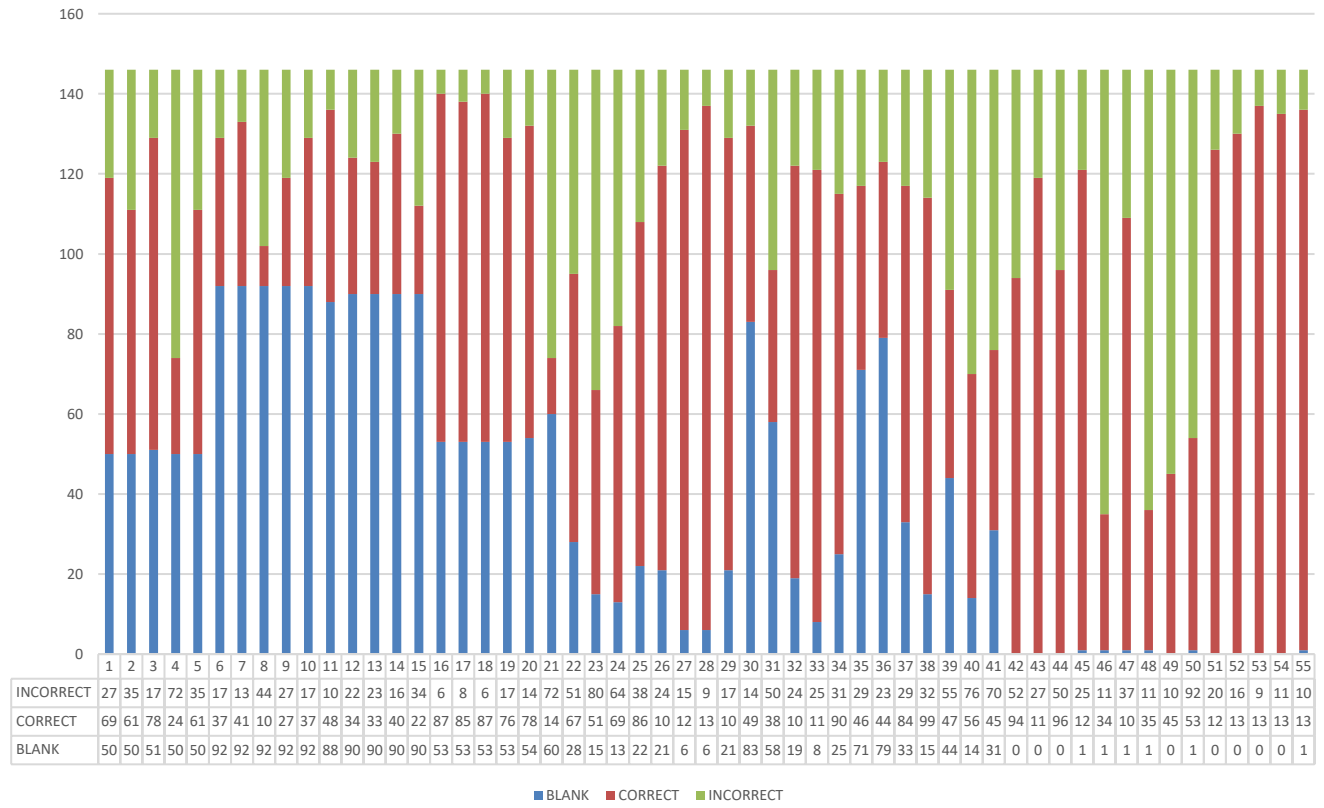
### RANGE TABLE

Range	No. of students
0-8	-
8-16	7
16-24	25
24-32	73
32-40	42

### RANGE GRAPH



QUESTIONWISE ATTEMPTS



■ BLANK ■ CORRECT ■ INCORRECT

## **CRITICAL QUESTIONS**

<p>46) समुद्र की परेशानी का इनमें से क्या कारण हो सकता है ?</p> <p>क) अत्यधिक गर्मी                      ख) बढ़ती आबादी ग) नदियों का सूखना                    घ) समुद्र तल की खुदाई</p> <p>उत्तर- घ) समुद्र तल की खुदाई</p>	<p>Children answered this question incorrectly.</p> <p><b>Remedial measures-</b> From the passage the question will be explained and ask them to underline the answer.</p>
<p>48) बावजूद कोशिश, वे फिर से चलने-फिरने के काबिल नहीं हो सके।</p> <p>इस वाक्य में वे किसके लिए प्रयुक्त हुआ है ?</p> <p>क) जहाज़ों के लिए                      ख) सैलानियों के लिए ग) जहाज़ के यात्रियों के लिए      घ) सड़क पर चल रहे लोगों के लिए</p> <p>उत्तर- ग) जहाज़ के यात्रियों के लिए</p>	<p>Children answered this question incorrectly.</p> <p><b>Remedial measures-</b> From the poem the summary will be explained and ask them to underline the answer.</p>
<p>49) लेखक की माँ उसे क्या सीख देती थी ?</p> <p>क) बड़ों की इज्जत करनी चाहिए ख) कभी भी पेड़ों के पत्ते नहीं तोड़ने चाहिए ग) अन्य जीवों का फ़ायदा नहीं उठाना चाहिए घ) सबके साथ आदरपूर्ण व्यवहार करना चाहिए</p> <p>उत्तर- घ) सबके साथ आदरपूर्ण व्यवहार करना चाहिए</p>	<p>. Children answered this question incorrectly.</p> <p><b>Remedial measures-</b> From the passage the question will be explained and ask them to underline the answer</p>
<p>50) एक वर्ली के समंदर के किनारे पर आकर गिरा, दूसरा बांद्रा में कार्टर रोड़ के सामने आँधे मुँह और तीसरा गेट वे ऑफ़ इंडिया पर टूट-फूटकर सैलानियों का नज़ारा बना।</p> <p>इस वाक्य में 'आँधे मुँह' से लेखक का क्या तात्पर्य है ?</p> <p>क) कि जहाज़ कार्टर रोड़ से टकरा गया</p>	<p>Children answered this question incorrectly.</p> <p><b>Remedial measures-</b> From the passage the question will be explained and ask them to underline the answer</p>

<p>ख) कि जहाज़ टूट-फूट गया ग) कि जहाज़ पलट गया घ) कि जहाज़ कार्टर रोड़ के बीचों-बीच आ गया उत्तर- ग) कि जहाज़ पलट गया</p>	
<p>23. दिए गए वाक्य में विशेषण पदबंध कौन-सा है ? हवा की तरह तेज़ दौड़ने वाला घोड़ा ही दौड़ में प्रथम आएगा। उत्तर- घ) हवा की तरह तेज़ दौड़ने वाला</p>	<p><b>Children answered this question incorrectly.</b> <b>Remedial measures- The grammar topic will be explained and remedial work sheet will be given</b></p>

## HALF YEARLY - 1 ( Math ) RESULT ANALYSIS

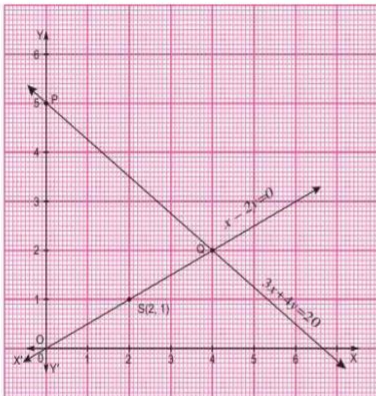
- No. of students – 158
- No. of students attempted the test – 145
- No. of students Absent –13

### CRITICAL QUESTIONS

25. A boat can row 1 km with stream in 10 minutes and 1 km against the stream in 20 minutes. The speed of the boat in still water is

- (a) 1.5 km/h (b) 3 km/h (c) 3.4 km/h (d) 4.5 km/h

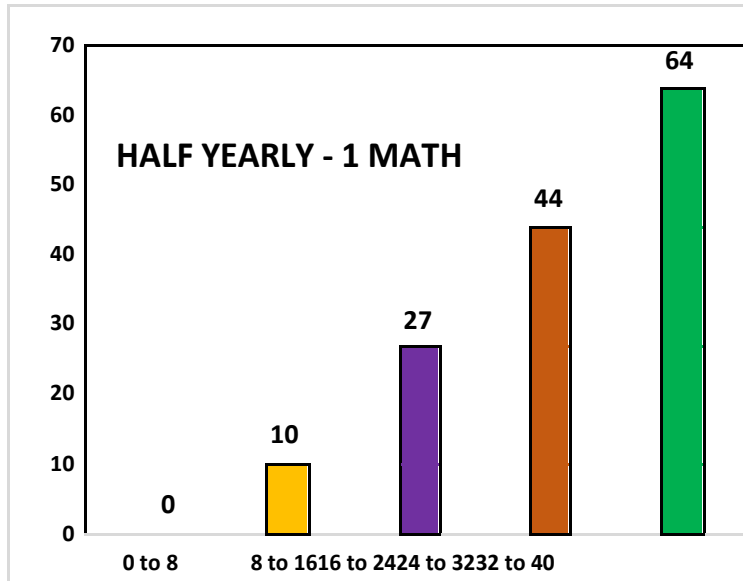
28. The coordinates of the vertices of triangle formed between the lines and y-axis from the graph is



- (a) (0, 5), (0, 0) and (6.5, 0) (b) (4, 2), (6, 0) and (6.5, 0)  
(c) (4, 2), (0, 0) and (0, 5) (d) none of these



## RANGE GRAPH



**RANGE TABLE**

Range	No. of students
0-8	0
8-16	10
16-24	27
24-32	44
32-40	64

**SECTION WISE PERCENTAGES**

**SECTIONWISE  
AVERAGES:  
SECTION-A- 71.18  
SECTION-B- 71.09  
SECTION-C- 71.74  
SECTION-D- 73.60  
OVERAL- 71.90%**

## Half Yearly -1 RESULT ANALYSIS (2021-22)

**Class: X**

**Subject: Science: Lesson-1,2,3,6**

**No. of Questions: 50 (MCQ s): Marks: 40**

**Time: 90min**

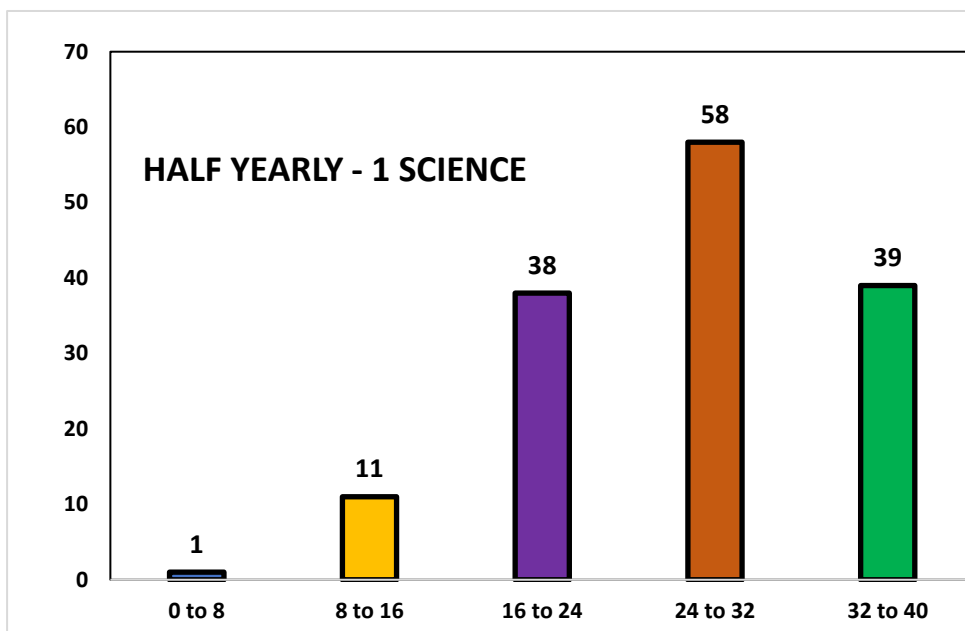
**Date: 24/10/2021**

**Total strength: 157**

**Total Present: 146**

**OVERALL CLASS AVERAGE: 65.89%**

### RANGE GRAPH:



### RANGE TABLE:

Range	No. of students
0-8	1
8-16	11
16-24	38
24-32	58
32-40	39

### SECTIONWISE AVERAGES:

SECTION-A- 69.26

SECTION-B- 62.05

SECTION-C- 66.94

SECTION-D- 67.12

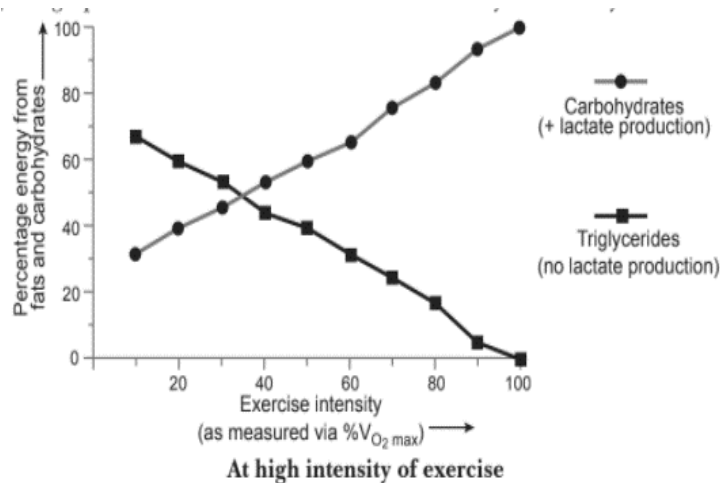
**OVERAL- 65.89**

## CRITICAL QUESTIONS

43. What is the number of iron atoms and hydrogen atoms in the balanced equation for the reaction of steam on iron?

- A. 3Fe and 8H
- B. 3Fe and 4H
- C. 3Fe and 6H
- D. 3Fe and 10H

58. The given graph indicates the effect of exercise intensity on carbohydrate consumption.



A. the anaerobic consumption of sugars increases

B. the aerobic consumption of sugars increases

C. the anaerobic consumption of sugars decreases

D. no consumption of sugars takes place

20. The chemical reaction between Hydrogen sulphide and iodine to give Hydrogen iodide and sulphur is given below:  $\text{H}_2\text{S} + \text{I}_2 \rightarrow 2\text{HI} + \text{S}$

The reducing and oxidizing agents involved in this redox reaction are:

- A. Iodine and sulphur respectively
- B. Iodine and hydrogen sulphide respectively
- C. Sulphur and iodine respectively
- D. Hydrogen sulphide and sulphur

31. **Assertion:** Conc  $\text{H}_2\text{SO}_4$  should be added slowly into water to get dilute acid with constant cooling.

- (a) Both A and R are true and R is the correct explanation of A.
- (b) Both A and R are true but R is not the correct explanation of A.
- (c) A is true but R is false.
- (d) A is false but R is true.

## HALF YEARLY EXAM – 1 (SOCIAL SCIENCE) RESULT ANALYSIS

- No. of students – 158
- No. of students attempted the test – 147
- Absent –10

### CRITICAL QUESTIONS

38. What were the main reasons for the civil war in Sri Lanka?

- Act was passed to recognize Sinhala as the official language.
- Constitution and government policies denied equal political rights.
- Sri Lankan Tamils wanted political autonomy.
- Distrust among the two communities

A. (I) and (II)      B. (II) and (III)      C. (III) and (I)      **D. Only IV**

31. Consider the following statements about power-sharing arrangements in Belgium and Sri Lanka.

- In Belgium, the Dutch-speaking majority people tried to impose their domination on the minority French-speaking community.
- In Sri Lanka, the policies of the government sought to ensure the dominance of the Sinhala-speaking majority.
- The Tamils in Sri Lanka demanded a federal arrangement of power-sharing to protect their culture, language and equality of opportunity in education and jobs.
- The transformation of Belgium from a unitary government to a federal one prevented a possible division of the country on linguistic lines.

Which of the above statements are correct?

A. **I, II, III and IV**      B. I, II, and IV      C. III and IV      D. II, III and IV

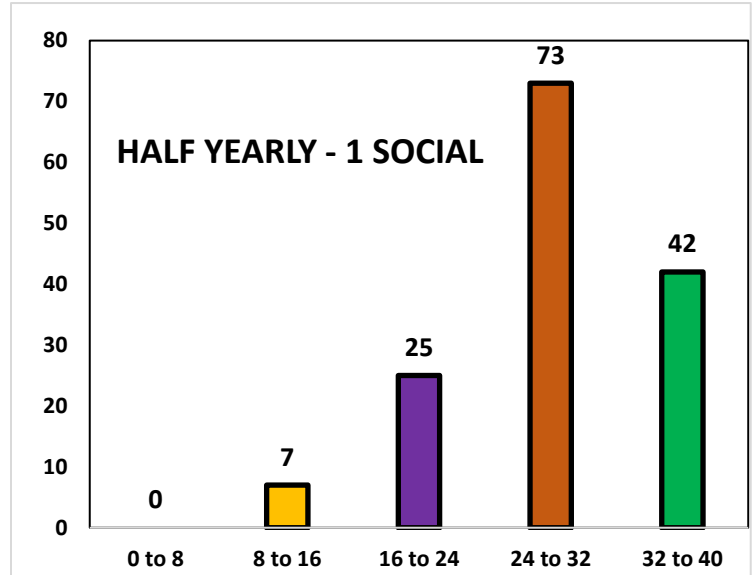
4. The term 'Universal Suffrage' means:

- The right to vote and get elected, granted only to men.**
- The right to vote for all adults.
- The right to vote and get elected, granted exclusively to property-owning men.
- The right to vote and get elected, granted only to educated men and women.

## RANGE TABLE

Range	No. of students
0-8	-
8-16	7
16-24	25
24-32	73
32-40	42

## RANGE GRAPH



## SECTION WISE PERCENTAGES

### SECTIONWISE AVERAGES:

SECTION-A-68.70 %

SECTION-B- 69.11 %

SECTION-C- 71.78 %

SECTION-D- 69.60 %

**OVERALL- 69.79%**